

**UNIVERSITY OF MAINE**  
**OFFICE OF RESEARCH AND SPONSORED PROGRAMS**

**ANNUAL REPORT  
OF  
EXTRAMURAL ACTIVITY**

**July 1, 2008 - June 30, 2009**

**University of Maine  
Office of Research and Sponsored Programs  
5717 Corbett Hall  
Orono, ME 04469-5717**

# TABLE OF CONTENTS

|  | PAGE |                                    | PAGE |
|--|------|------------------------------------|------|
| <b>INTRODUCTION</b>  |      | <b>SECTION II: AWARDS RECEIVED</b> |      |
| <b>SECTION I: SUMMARIES</b>                                |      | Awards Received: By Investigator   | 24   |
| Dollar Level of Proposals Submitted and Awards Received    | 2    |                                    |      |
| Number of New Proposals Submitted and Awards Received      | 3    |                                    |      |
| Dollars Awarded by Sponsor Type                            | 4    |                                    |      |
| Dollars Awarded by Project Type                            | 5    |                                    |      |
| External Awards by Sponsor Type and Project Type           | 6    |                                    |      |
| Summary of Awards Received: By Department                  | 7    |                                    |      |
| Summary of Awards Received: By Organized Research Unit     | 13   |                                    |      |
| Summary of Proposals Submitted: By Department              | 15   |                                    |      |
| Summary of Proposals Submitted: By Organized Research Unit | 22   |                                    |      |

## **RESEARCH AND SPONSORED PROGRAMS**

### **FY 2009 ANNUAL REPORT**

#### **INTRODUCTION**

This report is organized in two sections; both sections cover the time period from July 1, 2008 through June 30, 2009. The first section is a summary of the numbers and dollar volumes of extramural proposals and awards for the University. Graphs and tables are included that show trends over time and give breakdowns by type of activity and type of sponsor. The second section gives detailed information on awards received on a project-by-project basis.

Project citations in section two include the names of investigators, project titles, sponsor names, and level of funding. Dollar amounts are distributed among investigators according to the percent distribution of project responsibilities specified by them in the Proposal Approval Routing System (PARS). Citations are organized by the academic home departments of the investigators. In addition, projects which are administered by centers or other administrative units are listed in a separate section in which the gross dollar amounts are reported.

#### **PROPOSALS SUBMITTED AND AWARDS RECEIVED**

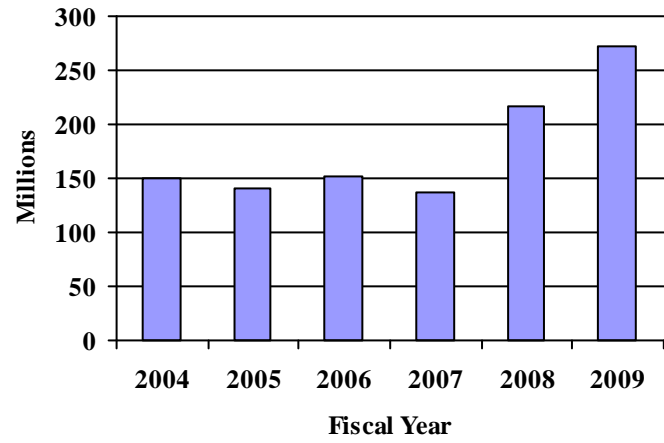
University of Maine faculty and staff submitted a total of 677 proposals during FY 2009. These proposals involved 394 faculty and professionals as principal investigators or co-investigators from 55 departments or units. A total of \$272,574,185 was requested from extramural sponsors. This compares with 617 in FY 2008 with a total request of \$217,061,694 .

A total of 429 awards for a total of \$57,240,046 were received from extramural sponsors during the year. The awarded projects involved 287 faculty and professional staff representing 47 departments or units. Sponsor funding was supplemented by University cost-sharing in the amount of \$12,934,236, bringing total project amounts for the period up to \$70,174,282. This compares with 406 awards received in FY2008 involving 262 faculty and staff with total project costs of \$54,505,855 including cost-sharing.

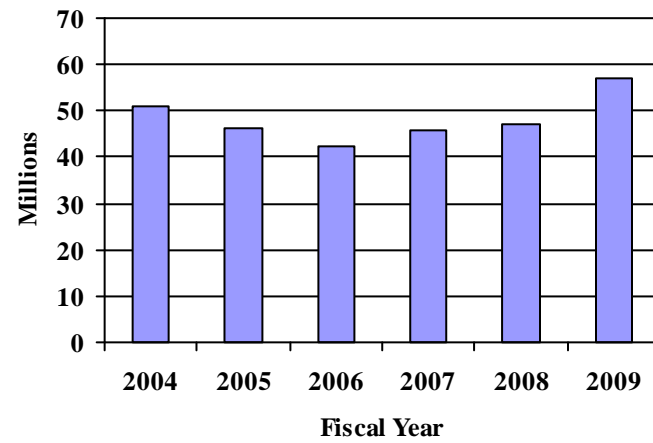
Of the new funding received during the period, 65.4% was from federal agencies, 28.9% from state and local government, and the remaining 5.8% from other sources including private business, industry and foundations.

Of the new funding received, 73.6% was for research, 1.8% for instruction, and 21.8% for other activities.

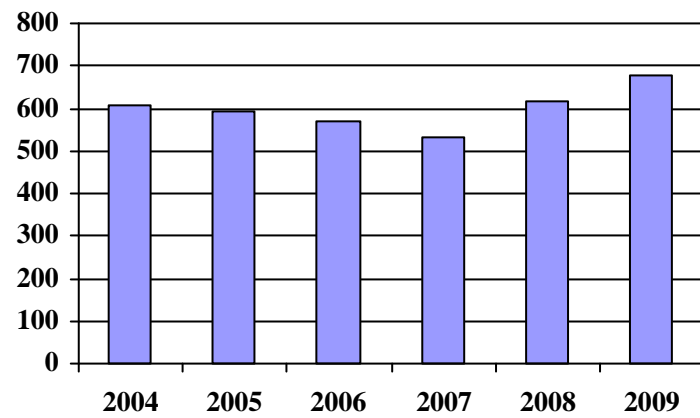
**Dollar Value of Proposals Submitted**



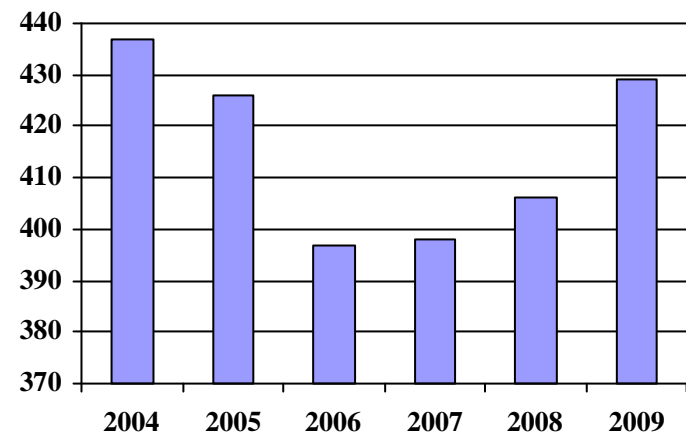
**Dollar Value of Awards Received**



**Number of Proposals Submitted**

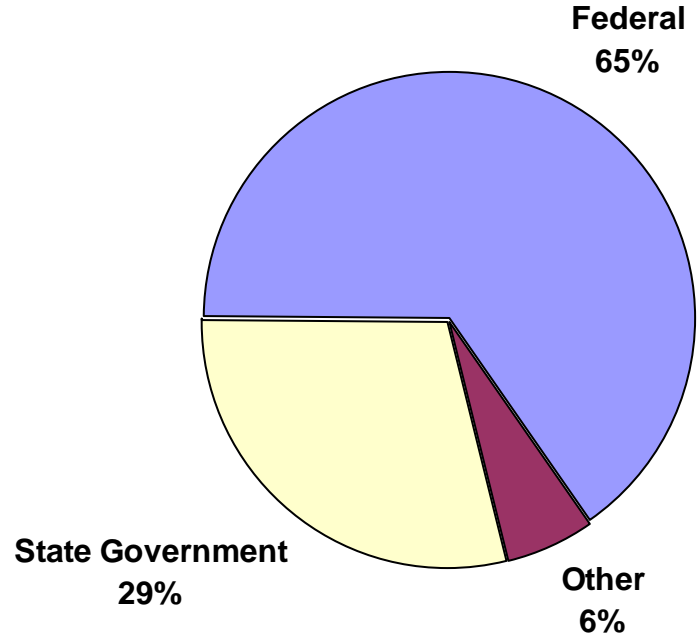


**Number of Awards Received**



# Dollars Awarded by Sponsor Type

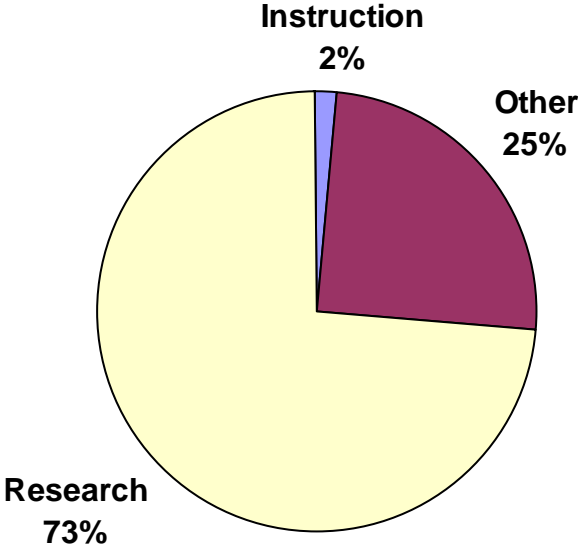
Fiscal Year 2009



Total Awarded: \$57,240,046

# Dollars Awarded by Project Type

Fiscal Year 2009



**EXTERNAL AWARDS BY SPONSOR TYPE AND PROJECT TYPE  
FY 2009**

| <b>Source of Funding</b>                | <b>Federal</b>      | <b>State</b>        | <b>Business &amp; Industry</b> | <b>Other Sources</b> | <b>Total</b>        | <b>Percent</b> |
|---|---------------------|---------------------|--------------------------------|----------------------|---------------------|----------------|
| <b>Numbers of Awards</b>                |                     |                     |                                |                      |                     |                |
| Research                                | 231                 | 25                  | 4                              | 34                   | 294                 | 68.5%          |
| Instruction                             | 4                   | 0                   | 1                              | 0                    | 5                   | 1.2%           |
| Other Activities                        | 67                  | 27                  | 0                              | 36                   | 130                 | 30.3%          |
| Total                                   | <u>302</u>          | <u>52</u>           | <u>5</u>                       | <u>70</u>            | <u>429</u>          | <u>100.0%</u>  |
| Percent                                 | 70.4%               | 12.1%               | 1.2%                           | 16.3%                | 100.0%              |                |
| <b>Dollar Amount of Awards Received</b> |                     |                     |                                |                      |                     |                |
| Research                                | \$26,269,158        | \$13,338,594        | \$94,355                       | \$2,429,297          | \$42,131,404        | 73.6%          |
| Instruction                             | \$1,017,345         | \$0                 | \$2,500                        | \$0                  | \$1,019,845         | 1.8%           |
| Other                                   | \$10,120,064        | \$3,197,746         | \$0                            | \$770,987            | \$14,088,797        | 24.6%          |
| Total                                   | <u>\$37,406,567</u> | <u>\$16,536,340</u> | <u>\$96,855</u>                | <u>\$3,200,284</u>   | <u>\$57,240,046</u> | <u>100.0%</u>  |
| Percent                                 | 65.4%               | 28.9%               | 0.2%                           | 5.6%                 | 100.0%              |                |

**RESEARCH AND SPONSORED PROGRAMS  
REPORT OF EXTRAMURAL ACTIVITY  
AWARDS RECEIVED FOR FY 2009**

| <b>VICE PRESIDENTIAL UNIT / COLLEGE/<br/>DEPARTMENT</b>     | <b>Number<br/>of Awards</b> | <b>Sponsor<br/>Total</b> | <b>UM<br/>Total</b> | <b>Total<br/>Amount</b> | <b>Sponsor<br/>Indirect</b> |
|---|-----------------------------|--------------------------|---------------------|-------------------------|-----------------------------|
| <b><u>VICE PRESIDENT FOR ACADEMIC AFFAIRS</u></b>           |                             |                          |                     |                         |                             |
| <b><i>ACADEMIC AFFAIRS</i></b>                              |                             |                          |                     |                         |                             |
| Academic Affairs  | 2.00                        | \$100,000                | \$0                 | \$100,000               | \$0                         |
| <b>SUBTOTAL:</b>  | 2.00                        | \$100,000                | \$0                 | \$100,000               | \$0                         |
| <b><i>COLLEGE OF BUSINESS, PUBLIC POLICY AND HEALTH</i></b> |                             |                          |                     |                         |                             |
| Maine Business School                                       | .50                         | \$100,000                | \$8,314             | \$108,314               | \$8,314                     |
| Public Administration                                       | .10                         | \$8,704                  | \$1,622             | \$10,326                | \$1,622                     |
| School of Economics (BPPH)                                  | .90                         | \$46,726                 | \$10,171            | \$56,897                | \$9,295                     |
| School of Social Work                                       | 16.00                       | \$576,021                | \$210,786           | \$786,807               | \$60,819                    |
| <b>SUBTOTAL:</b>  | 17.50                       | \$731,451                | \$230,893           | \$962,344               | \$80,050                    |
| <b><i>COLLEGE OF EDUCATION AND HUMAN DEVELOPMENT</i></b>    |                             |                          |                     |                         |                             |
| Education and Human Development                             | 43.00                       | \$7,397,174              | \$1,069,268         | \$8,466,442             | \$553,592                   |
| <b>SUBTOTAL:</b>  | 43.00                       | \$7,397,174              | \$1,069,268         | \$8,466,442             | \$553,592                   |

Awards Received for FY 2009

| <b>VICE PRESIDENTIAL UNIT / COLLEGE/<br/>DEPARTMENT</b> | <b>Number<br/>of Awards</b> | <b>Sponsor<br/>Total</b> | <b>UM<br/>Total</b> | <b>Total<br/>Amount</b> | <b>Sponsor<br/>Indirect</b> |
|---|-----------------------------|--------------------------|---------------------|-------------------------|-----------------------------|
| <b><i>COLLEGE OF ENGINEERING</i></b>                    |                             |                          |                     |                         |                             |
| Chemical and Biological Engineering                     | 12.45                       | \$6,040,659              | \$1,397,869         | \$7,438,528             | \$667,913                   |
| Civil and Environmental Engineering                     | 14.26                       | \$2,589,028              | \$975,364           | \$3,564,392             | \$213,382                   |
| Electrical and Computer Engineering                     | 12.75                       | \$2,179,697              | \$506,298           | \$2,685,995             | \$414,551                   |
| Mechanical Engineering                                  | 4.45                        | \$161,497                | \$145,209           | \$306,707               | \$34,320                    |
| Spatial Information Science and Engineering             | 5.20                        | \$595,534                | \$0                 | \$595,534               | \$160,453                   |
| <b>SUBTOTAL:</b>  | <b>49.11</b>                | <b>\$11,566,415</b>      | <b>\$3,024,740</b>  | <b>\$14,591,155</b>     | <b>\$1,490,619</b>          |
| <b><i>COLLEGE OF LIBERAL ARTS AND SCIENCES</i></b>      |                             |                          |                     |                         |                             |
| Anthropology  | 1.60                        | \$167,831                | \$31,776            | \$199,607               | \$42,057                    |
| Chemistry   | 2.73                        | \$555,530                | \$102,371           | \$657,901               | \$110,380                   |
| Communication and Journalism                            | 2.25                        | \$224,987                | \$4,703             | \$229,690               | \$27,620                    |
| Communication Sciences and Disorders                    | 1.00                        | \$875                    | \$0                 | \$875                   | \$0                         |
| Computer Science  | 1.50                        | \$137,814                | \$33,883            | \$171,697               | \$43,308                    |
| History   | 2.00                        | \$33,500                 | \$5,376             | \$38,876                | \$0                         |
| Maine Folklife Center                                   | 2.00                        | \$13,996                 | \$16,438            | \$30,434                | \$496                       |
| Mathematics   | 4.25                        | \$212,008                | \$21,426            | \$233,434               | \$49,208                    |
| Modern Languages and Classics                           | .75                         | \$224,966                | \$14,108            | \$239,075               | \$11,998                    |
| Physics and Astronomy                                   | 7.35                        | \$1,566,758              | \$109,201           | \$1,675,959             | \$415,016                   |
| Psychology  | 6.80                        | \$1,608,775              | \$80,732            | \$1,689,508             | \$382,991                   |
| Sociology   | 1.00                        | \$125,042                | \$0                 | \$125,042               | \$35,655                    |
| <b>SUBTOTAL:</b>  | <b>33.23</b>                | <b>\$4,872,083</b>       | <b>\$420,013</b>    | <b>\$5,292,096</b>      | <b>\$1,118,728</b>          |

Awards Received for FY 2009

| <b>VICE PRESIDENTIAL UNIT / COLLEGE/<br/>DEPARTMENT</b>           | <b>Number<br/>of Awards</b> | <b>Sponsor<br/>Total</b> | <b>UM<br/>Total</b> | <b>Total<br/>Amount</b> | <b>Sponsor<br/>Indirect</b> |
|---|-----------------------------|--------------------------|---------------------|-------------------------|-----------------------------|
| <b>COLLEGE OF NATURAL SCIENCES, FORESTRY, AND<br/>AGRICULTURE</b> |                             |                          |                     |                         |                             |
| Natural Sciences, Forestry, and Agriculture                       | 6.00                        | \$111,910                | \$39,466            | \$151,376               | \$10,174                    |
| Animal and Veterinary Sciences                                    | .75                         | \$133,816                | \$0                 | \$133,816               | \$39,662                    |
| Biochemistry, Microbiology, & Molecular Biology                   | 8.34                        | \$1,014,826              | \$46,553            | \$1,061,379             | \$297,468                   |
| Earth Sciences  | 16.65                       | \$4,194,388              | \$803,166           | \$4,997,554             | \$643,546                   |
| Food Science and Human Nutrition                                  | 6.41                        | \$254,500                | \$41,185            | \$295,684               | \$26,247                    |
| Forest Management   | 5.70                        | \$233,633                | \$142,446           | \$376,079               | \$2,564                     |
| Plant, Soil and Environmental Sciences                            | 10.30                       | \$916,364                | \$72,473            | \$988,836               | \$150,217                   |
| School of Biological & Ecological Sciences                        | 25.15                       | \$1,277,423              | \$200,948           | \$1,478,371             | \$223,267                   |
| School of Economics (NSFA)  | 8.15                        | \$283,451                | \$40,965            | \$324,416               | \$38,727                    |
| School of Forest Resources  | 19.99                       | \$4,354,939              | \$1,528,911         | \$5,883,850             | \$47,323                    |
| School of Marine Sciences   | 58.90                       | \$6,885,776              | \$464,784           | \$7,350,560             | \$1,667,029                 |
| Wildlife Ecology  | 13.00                       | \$452,904                | \$408,331           | \$861,235               | \$24,610                    |
| <b>SUBTOTAL:</b>  | <b>179.34</b>               | <b>\$20,113,929</b>      | <b>\$3,789,227</b>  | <b>\$23,903,156</b>     | <b>\$3,170,833</b>          |
| <b>COOPERATIVE EXTENSION</b>                                      |                             |                          |                     |                         |                             |
| Cooperative Extension   | 47.18                       | \$4,102,567              | \$383,848           | \$4,486,415             | \$403,300                   |
| <b>SUBTOTAL:</b>  | <b>47.18</b>                | <b>\$4,102,567</b>       | <b>\$383,848</b>    | <b>\$4,486,415</b>      | <b>\$403,300</b>            |
| <b>DIVISION OF LIFELONG LEARNING</b>                              |                             |                          |                     |                         |                             |
| Peace Studies   | 1.00                        | \$64,744                 | \$4,990             | \$69,734                | \$4,989                     |
| Wabanaki Center   | 1.00                        | \$4,000                  | \$474               | \$4,474                 | \$472                       |
| Women's Resource Center   | 1.00                        | \$28,445                 | \$10,295            | \$38,740                | \$0                         |
| <b>SUBTOTAL:</b>  | <b>3.00</b>                 | <b>\$97,189</b>          | <b>\$15,759</b>     | <b>\$112,948</b>        | <b>\$5,461</b>              |

Awards Received for FY 2009

| <b>VICE PRESIDENTIAL UNIT / COLLEGE/<br/>DEPARTMENT</b> | <b>Number<br/>of Awards</b> | <b>Sponsor<br/>Total</b> | <b>UM<br/>Total</b> | <b>Total<br/>Amount</b> | <b>Sponsor<br/>Indirect</b> |
|---|-----------------------------|--------------------------|---------------------|-------------------------|-----------------------------|
| <b><i>HONORS COLLEGE</i></b>                            |                             |                          |                     |                         |                             |
| Honors College  | 1.00                        | \$128,293                | \$0                 | \$128,293               | \$29,743                    |
| <b>SUBTOTAL:</b>  | 1.00                        | \$128,293                | \$0                 | \$128,293               | \$29,743                    |
| <b><i>LIBRARIES</i></b>                                 |                             |                          |                     |                         |                             |
| Fogler Library  | 2.00                        | \$24,398                 | \$1,215             | \$25,613                | \$3,365                     |
| <b>SUBTOTAL:</b>  | 2.00                        | \$24,398                 | \$1,215             | \$25,613                | \$3,365                     |
| <b><u>UNKNOWN ORGANIZATIONAL ENTITY</u></b>             |                             |                          |                     |                         |                             |
| <b><i>ADMINISTRATION AND FINANCE</i></b>                |                             |                          |                     |                         |                             |
| Administration and Finance                              | .01                         | \$994                    | \$266               | \$1,260                 | \$0                         |
| Facilities Management                                   | 1.00                        | \$13,483                 | \$11,889            | \$25,372                | \$0                         |
| <b>SUBTOTAL:</b>  | 1.01                        | \$14,477                 | \$12,155            | \$26,632                | \$0                         |
| <b><u>CHIEF FINANCIAL OFFICER</u></b>                   |                             |                          |                     |                         |                             |
| <b><i>HUMAN RESOURCES</i></b>                           |                             |                          |                     |                         |                             |
| Children's Center                                       | .99                         | \$98,374                 | \$26,365            | \$124,739               | \$0                         |
| <b>SUBTOTAL:</b>  | .99                         | \$98,374                 | \$26,365            | \$124,739               | \$0                         |

Awards Received for FY 2009

| <b>VICE PRESIDENTIAL UNIT / COLLEGE/<br/>DEPARTMENT</b> | <b>Number<br/>of Awards</b> | <b>Sponsor<br/>Total</b> | <b>UM<br/>Total</b> | <b>Total<br/>Amount</b> | <b>Sponsor<br/>Indirect</b> |
|---|-----------------------------|--------------------------|---------------------|-------------------------|-----------------------------|
| <b><u>VICE PRESIDENT FOR RESEARCH</u></b>               |                             |                          |                     |                         |                             |
| <b><i>RESEARCH</i></b>                                  |                             |                          |                     |                         |                             |
| Advanced Engineered Wood Composites Center              | 4.04                        | \$2,447,754              | \$864,703           | \$3,312,458             | \$210,052                   |
| Canadian American Center                                | 2.00                        | \$361,807                | \$0                 | \$361,807               | \$9,698                     |
| Center for Community Inclusion & Disability Studies     | 1.00                        | \$25,000                 | \$3,818             | \$28,818                | \$2,273                     |
| Center on Aging   | 10.00                       | \$213,860                | \$55,440            | \$269,300               | \$4,130                     |
| Climate Change Institute                                | 4.35                        | \$786,480                | \$0                 | \$786,480               | \$244,088                   |
| Department of Industrial Cooperation                    | 1.90                        | \$2,375,008              | \$2,374,318         | \$4,749,326             | \$5,611                     |
| Margaret Chase Smith Center                             | 5.65                        | \$469,942                | \$5,391             | \$475,333               | \$148,370                   |
| Sea Grant Program                                       | 11.00                       | \$800,086                | \$437,600           | \$1,237,686             | \$212,195                   |
| Senator George J. Mitchell Center                       | 7.70                        | \$361,908                | \$109,566           | \$471,474               | \$65,714                    |
| <b>SUBTOTAL:</b>  | <b>47.64</b>                | <b>\$7,841,846</b>       | <b>\$3,850,836</b>  | <b>\$11,692,682</b>     | <b>\$902,132</b>            |
| <b><u>VICE PRESIDENT FOR STUDENT AFFAIRS</u></b>        |                             |                          |                     |                         |                             |
| <b><i>STUDENT AFFAIRS</i></b>                           |                             |                          |                     |                         |                             |
| Public Safety   | 1.00                        | \$51,975                 | \$0                 | \$51,975                | \$0                         |
| <b>SUBTOTAL:</b>  | <b>1.00</b>                 | <b>\$51,975</b>          | <b>\$0</b>          | <b>\$51,975</b>         | <b>\$0</b>                  |
| <b><i>STUDENT HEALTH SERVICES</i></b>                   |                             |                          |                     |                         |                             |
| Cutler Health Center                                    | 1.00                        | \$99,875                 | \$109,917           | \$209,792               | \$21,110                    |
| <b>SUBTOTAL:</b>  | <b>1.00</b>                 | <b>\$99,875</b>          | <b>\$109,917</b>    | <b>\$209,792</b>        | <b>\$21,110</b>             |

Awards Received for FY 2009

| <b>VICE PRESIDENTIAL UNIT / COLLEGE/<br/>DEPARTMENT</b> | <b>Number<br/>of Awards</b> | <b>Sponsor<br/>Total</b> | <b>UM<br/>Total</b> | <b>Total<br/>Amount</b> | <b><i>Sponsor<br/>Indirect</i></b> |
|---|-----------------------------|--------------------------|---------------------|-------------------------|------------------------------------|
| <b><u>Totals for FY 2009</u></b>                        |                             |                          |                     |                         |                                    |
| Total Number of Awards:                                 | 429                         |                          |                     |                         |                                    |
| Sponsor Total:  |                             | \$57,240,046             |                     |                         |                                    |
| UM Total:   |                             |                          | \$12,934,236        |                         |                                    |
| Project Total:  |                             | \$70,174,282             |                     |                         |                                    |
| <i>Indirect Costs:</i>                                  |                             |                          |                     |                         | \$7,778,933                        |

**SUMMARY OF AWARDS RECEIVED ORGANIZED BY  
RESEARCH UNITS FY 2009**

| <b>RESEARCH UNIT</b>                                    | <b>NUMBER OF<br/>AWARDS</b> | <b>SPONSOR<br/>TOTAL</b> | <b>UM<br/>TOTAL</b> | <b>PROJECT<br/>TOTAL</b> | <b>SPONSOR<br/>INDIRECT</b> |
|---|-----------------------------|--------------------------|---------------------|--------------------------|-----------------------------|
| Advanced Engineered Wood Composites Center              | 6                           | \$6,173,373              | \$2,479,985         | \$8,653,358              | \$333,530                   |
| Canadian American Center                                | 2                           | \$361,807                | \$0                 | \$361,807                | \$9,698                     |
| Center for Community Inclusion and Disability Studies   | 15                          | \$3,007,516              | \$565,038           | \$3,572,554              | \$226,120                   |
| Center for Cooperative Aquaculture Research             | 2                           | \$2,636,989              | \$2,638,131         | \$5,275,120              | \$5,611                     |
| Center for Research on Sustainable Forests              | 3                           | \$94,525                 | \$19,148            | \$113,673                | \$4,165                     |
| Center for Science and Mathematics Education Research   | 1                           | \$19,488                 | \$10,748            | \$30,236                 | \$2,303                     |
| Center on Aging   | 19                          | \$540,460                | \$183,543           | \$724,003                | \$45,876                    |
| Climate Change Institute                                | 19                          | \$3,471,454              | \$628,545           | \$4,099,999              | \$528,298                   |
| Cooperative Fish and Wildlife Unit                      | 1                           | \$7,625                  | \$774               | \$8,399                  | \$0                         |
| Forest Bioproducts Research Project                     | 5                           | \$6,149,411              | \$1,642,361         | \$7,791,772              | \$392,711                   |
| Laboratory for Surface Science and Technology           | 3                           | \$1,807,000              | \$363,894           | \$2,170,894              | \$365,039                   |
| Maine Agriculture and Forestry Experiment Station       | 40                          | \$2,188,111              | \$545,398           | \$2,733,509              | \$110,161                   |
| Margaret Chase Smith Center                             | 7                           | \$789,339                | \$36,366            | \$825,705                | \$161,561                   |
| National Center for Geographic Information and Analysis | 1                           | \$103,855                | \$0                 | \$103,855                | \$30,442                    |

|                                   |            |                     |                     |                     |                    |
|-----------------------------------|------------|---------------------|---------------------|---------------------|--------------------|
| NSF EPSCoR Programs               | 1          | \$28,445            | \$10,295            | \$38,740            | \$0                |
| School of Forest Resources        | 13         | \$1,049,992         | \$175,448           | \$1,225,440         | \$124,746          |
| School of Marine Sciences         | 58         | \$6,052,920         | \$185,125           | \$6,238,045         | \$1,507,055        |
| Sea Grant Program                 | 12         | \$813,575           | \$432,992           | \$1,246,567         | \$214,620          |
| Senator George J. Mitchell Center | 13         | \$346,824           | \$246,045           | \$592,869           | \$62,118           |
| Wabanaki Center                   | 1          | \$4,000             | \$474               | \$4,474             | \$472              |
| <b>TOTALS</b>                     | <b>222</b> | <b>\$35,646,709</b> | <b>\$10,164,310</b> | <b>\$45,811,019</b> | <b>\$4,124,526</b> |

**RESEARCH AND SPONSORED PROGRAMS  
REPORT OF EXTRAMURAL ACTIVITY  
NEW and SUPPLEMENTAL PROPOSALS SUBMITTED FOR FY 2009**

| <b>VICE PRESIDENTIAL UNIT / COLLEGE/<br/>DEPARTMENT</b>     | <b>Number of<br/>Proposals</b> | <b>Sponsor<br/>Total</b> | <b>UM<br/>Total</b> | <b>Total<br/>Amount</b> | <b>Sponsor<br/>Indirect</b> |
|---|--------------------------------|--------------------------|---------------------|-------------------------|-----------------------------|
| <b><u>VICE PRESIDENT FOR ACADEMIC AFFAIRS</u></b>           |                                |                          |                     |                         |                             |
| <b><i>ACADEMIC AFFAIRS</i></b>                              |                                |                          |                     |                         |                             |
| Academic Affairs  | 2.15                           | \$370,304                | \$75,342            | \$445,646               | \$54,715                    |
| <b>SUBTOTAL:</b>  | 2.15                           | \$370,304                | \$75,342            | \$445,646               | \$54,715                    |
| <b><i>COLLEGE OF BUSINESS, PUBLIC POLICY AND HEALTH</i></b> |                                |                          |                     |                         |                             |
| Maine Business School                                       | 9.82                           | \$235,564                | \$23,968            | \$259,532               | \$41,545                    |
| Public Administration                                       | .10                            | \$8,704                  | \$1,622             | \$10,326                | \$1,622                     |
| School of Economics (BPPH)                                  | 1.05                           | \$213,250                | \$23,624            | \$236,874               | \$48,719                    |
| School of Social Work                                       | 27.00                          | \$4,200,945              | \$823,626           | \$5,024,571             | \$358,130                   |
| <b>SUBTOTAL:</b>  | 37.97                          | \$4,658,463              | \$872,839           | \$5,531,302             | \$450,016                   |
| <b><i>COLLEGE OF EDUCATION AND HUMAN DEVELOPMENT</i></b>    |                                |                          |                     |                         |                             |
| Education and Human Development                             | 44.95                          | \$13,188,599             | \$1,678,432         | \$14,867,031            | \$1,720,108                 |
| <b>SUBTOTAL:</b>  | 44.95                          | \$13,188,599             | \$1,678,432         | \$14,867,031            | \$1,720,108                 |

Proposals Submitted for FY 2009

| <b>VICE PRESIDENTIAL UNIT / COLLEGE/<br/>DEPARTMENT</b> | <b>Number of<br/>Proposals</b> | <b>Sponsor<br/>Total</b> | <b>UM<br/>Total</b> | <b>Total<br/>Amount</b> | <b>Sponsor<br/>Indirect</b> |
|---|--------------------------------|--------------------------|---------------------|-------------------------|-----------------------------|
| <b><i>COLLEGE OF ENGINEERING</i></b>                    |                                |                          |                     |                         |                             |
| Chemical and Biological Engineering                     | 25.31                          | \$38,257,592             | \$6,786,201         | \$45,043,793            | \$7,909,501                 |
| Civil and Environmental Engineering                     | 22.43                          | \$5,707,000              | \$725,972           | \$6,432,972             | \$1,105,917                 |
| Electrical and Computer Engineering                     | 23.72                          | \$13,425,822             | \$2,157,705         | \$15,583,527            | \$2,543,479                 |
| Mechanical Engineering                                  | 14.85                          | \$7,565,077              | \$2,196,899         | \$9,761,975             | \$1,610,983                 |
| School of Engineering Technology                        | 2.65                           | \$551,116                | \$105,580           | \$656,696               | \$73,197                    |
| Spatial Information Science and Engineering             | 13.03                          | \$5,822,536              | \$395,252           | \$6,217,788             | \$1,697,607                 |
| <b>SUBTOTAL:</b>  | 101.99                         | \$71,329,144             | \$12,367,608        | \$83,696,752            | \$14,940,683                |

Proposals Submitted for FY 2009

| <b>VICE PRESIDENTIAL UNIT / COLLEGE/<br/>DEPARTMENT</b> | <b>Number of<br/>Proposals</b> | <b>Sponsor<br/>Total</b> | <b>UM<br/>Total</b> | <b>Total<br/>Amount</b> | <b>Sponsor<br/>Indirect</b> |
|---|--------------------------------|--------------------------|---------------------|-------------------------|-----------------------------|
| <b><i>COLLEGE OF LIBERAL ARTS AND SCIENCES</i></b>      |                                |                          |                     |                         |                             |
| Liberal Arts and Sciences                               | .10                            | \$432,097                | \$82,553            | \$514,649               | \$84,546                    |
| Anthropology  | 3.05                           | \$883,603                | \$50,903            | \$934,506               | \$205,490                   |
| Chemistry   | 14.35                          | \$5,073,490              | \$734,276           | \$5,807,766             | \$1,412,928                 |
| Communication and Journalism                            | 2.38                           | \$999,893                | \$259,907           | \$1,259,800             | \$238,042                   |
| Communication Sciences and Disorders                    | 1.00                           | \$875                    | \$0                 | \$875                   | \$0                         |
| Computer Science  | 2.66                           | \$1,290,902              | \$232,994           | \$1,523,896             | \$191,063                   |
| English   | .50                            | \$14,800                 | \$3,297             | \$18,097                | \$0                         |
| History   | 2.00                           | \$33,500                 | \$5,376             | \$38,876                | \$0                         |
| Maine Folklife Center                                   | 3.70                           | \$441,372                | \$356,936           | \$798,307               | \$54,450                    |
| Mathematics   | 7.36                           | \$2,445,004              | \$440,365           | \$2,885,369             | \$435,316                   |
| Native American Studies                                 | 1.00                           | \$4,890                  | \$1,311             | \$6,201                 | \$0                         |
| New Media Program                                       | 2.00                           | \$3,745,434              | \$3,983,551         | \$7,728,985             | \$9,774                     |
| Physics and Astronomy                                   | 15.40                          | \$8,387,695              | \$721,997           | \$9,109,691             | \$1,605,006                 |
| Psychology  | 12.20                          | \$3,604,137              | \$117,522           | \$3,721,658             | \$932,506                   |
| <b>SUBTOTAL:</b>  | 67.69                          | \$27,357,691             | \$6,990,986         | \$34,348,677            | \$5,169,120                 |

Proposals Submitted for FY 2009

| <b>VICE PRESIDENTIAL UNIT / COLLEGE/<br/>DEPARTMENT</b>           | <b>Number of<br/>Proposals</b> | <b>Sponsor<br/>Total</b> | <b>UM<br/>Total</b> | <b>Total<br/>Amount</b> | <b>Sponsor<br/>Indirect</b> |
|---|--------------------------------|--------------------------|---------------------|-------------------------|-----------------------------|
| <b>COLLEGE OF NATURAL SCIENCES, FORESTRY, AND<br/>AGRICULTURE</b> |                                |                          |                     |                         |                             |
| Natural Sciences, Forestry, and Agriculture                       | 6.60                           | \$16,303,659             | \$30,320            | \$16,333,979            | \$6,844                     |
| Animal and Veterinary Sciences                                    | .89                            | \$2,901,723              | \$1,419,925         | \$4,321,649             | \$10,145                    |
| Biochemistry, Microbiology, & Molecular Biology                   | 17.30                          | \$6,774,292              | \$1,941,481         | \$8,715,773             | \$1,392,235                 |
| Earth Sciences  | 21.92                          | \$6,737,372              | \$710,167           | \$7,447,540             | \$1,630,581                 |
| Food Science and Human Nutrition                                  | 13.86                          | \$4,633,190              | \$1,684,732         | \$6,317,922             | \$787,924                   |
| Forest Ecosystem Science  | 4.15                           | \$1,036,545              | \$39,237            | \$1,075,782             | \$291,139                   |
| Forest Management   | 4.66                           | \$771,133                | \$286,197           | \$1,057,331             | \$130,432                   |
| Plant, Soil and Environmental Sciences                            | 21.43                          | \$7,544,158              | \$4,157,255         | \$11,701,413            | \$1,388,151                 |
| School of Biological & Ecological Sciences                        | 44.64                          | \$11,087,456             | \$3,846,474         | \$14,933,931            | \$2,552,049                 |
| School of Economics (NSFA)  | 13.72                          | \$5,190,233              | \$1,808,367         | \$6,998,599             | \$1,278,934                 |
| School of Forest Resources  | 22.03                          | \$14,929,386             | \$2,427,729         | \$17,357,115            | \$2,304,180                 |
| School of Marine Sciences   | 83.35                          | \$35,824,122             | \$17,701,792        | \$53,525,913            | \$7,536,474                 |
| School of Nursing   | 2.00                           | \$110,000                | \$40,354            | \$150,354               | \$9,091                     |
| Wildlife Ecology  | 17.30                          | \$2,734,733              | \$879,387           | \$3,614,120             | \$641,565                   |
| <b>SUBTOTAL:</b>  | <b>273.85</b>                  | <b>\$116,578,004</b>     | <b>\$36,973,417</b> | <b>\$153,551,421</b>    | <b>\$19,959,745</b>         |
| <b>COOPERATIVE EXTENSION</b>                                      |                                |                          |                     |                         |                             |
| Cooperative Extension   | 69.89                          | \$15,289,205             | \$8,813,774         | \$24,102,979            | \$1,131,399                 |
| <b>SUBTOTAL:</b>  | <b>69.89</b>                   | <b>\$15,289,205</b>      | <b>\$8,813,774</b>  | <b>\$24,102,979</b>     | <b>\$1,131,399</b>          |

Proposals Submitted for FY 2009

| <b>VICE PRESIDENTIAL UNIT / COLLEGE/<br/>DEPARTMENT</b> | <b>Number of<br/>Proposals</b> | <b>Sponsor<br/>Total</b> | <b>UM<br/>Total</b> | <b>Total<br/>Amount</b> | <b>Sponsor<br/>Indirect</b> |
|---|--------------------------------|--------------------------|---------------------|-------------------------|-----------------------------|
| <b><i>DIVISION OF LIFELONG LEARNING</i></b>             |                                |                          |                     |                         |                             |
| Peace Studies   | 1.00                           | \$64,744                 | \$4,990             | \$69,734                | \$4,989                     |
| Wabanaki Center   | 1.60                           | \$551,719                | \$886               | \$552,605               | \$107,778                   |
| <b>SUBTOTAL:</b>  | 2.60                           | \$616,463                | \$5,876             | \$622,339               | \$112,767                   |
| <b><i>HONORS COLLEGE</i></b>                            |                                |                          |                     |                         |                             |
| Honors College  | 1.00                           | \$678,239                | \$0                 | \$678,239               | \$157,801                   |
| <b>SUBTOTAL:</b>  | 1.00                           | \$678,239                | \$0                 | \$678,239               | \$157,801                   |
| <b><i>LIBRARIES</i></b>                                 |                                |                          |                     |                         |                             |
| Fogler Library  | 1.90                           | \$899,993                | \$462,767           | \$1,362,760             | \$180,045                   |
| Hudson Museum   | 1.00                           | \$5,670                  | \$5,675             | \$11,345                | \$670                       |
| Maine Center for the Arts                               | 1.00                           | \$285,000                | \$0                 | \$285,000               | \$0                         |
| <b>SUBTOTAL:</b>  | 3.90                           | \$1,190,663              | \$468,442           | \$1,659,105             | \$180,715                   |
| <b><u>UNKNOWN ORGANIZATIONAL ENTITY</u></b>             |                                |                          |                     |                         |                             |
| <b><i>ADMINISTRATION AND FINANCE</i></b>                |                                |                          |                     |                         |                             |
| Administration and Finance                              | .01                            | \$994                    | \$266               | \$1,260                 | \$0                         |
| Facilities Management                                   | 1.00                           | \$13,483                 | \$11,889            | \$25,372                | \$0                         |
| <b>SUBTOTAL:</b>  | 1.01                           | \$14,477                 | \$12,155            | \$26,632                | \$0                         |

Proposals Submitted for FY 2009

| <b>VICE PRESIDENTIAL UNIT / COLLEGE/<br/>DEPARTMENT</b> | <b>Number of<br/>Proposals</b> | <b>Sponsor<br/>Total</b> | <b>UM<br/>Total</b> | <b>Total<br/>Amount</b> | <b>Sponsor<br/>Indirect</b> |
|---|--------------------------------|--------------------------|---------------------|-------------------------|-----------------------------|
| <b><u>CHIEF FINANCIAL OFFICER</u></b>                   |                                |                          |                     |                         |                             |
| <b><i>CHIEF FINANCIAL OFFICER</i></b>                   |                                |                          |                     |                         |                             |
| Information Technology Services                         | .99                            | \$1,972,318              | \$525,422           | \$2,497,740             | \$139,171                   |
| <b>SUBTOTAL:</b>  | .99                            | \$1,972,318              | \$525,422           | \$2,497,740             | \$139,171                   |
| <b><i>HUMAN RESOURCES</i></b>                           |                                |                          |                     |                         |                             |
| Children's Center                                       | .99                            | \$98,374                 | \$26,365            | \$124,739               | \$0                         |
| <b>SUBTOTAL:</b>  | .99                            | \$98,374                 | \$26,365            | \$124,739               | \$0                         |
| <b><u>VICE PRESIDENT FOR RESEARCH</u></b>               |                                |                          |                     |                         |                             |
| <b><i>RESEARCH</i></b>                                  |                                |                          |                     |                         |                             |
| Research  | .58                            | \$1,692,250              | \$895,378           | \$2,587,628             | \$264,466                   |
| Advanced Engineered Wood Composites Center              | 7.75                           | \$4,535,828              | \$505,924           | \$5,041,752             | \$710,653                   |
| Center for Community Inclusion & Disability Studies     | 2.00                           | \$391,904                | \$53,220            | \$445,124               | \$23,295                    |
| Center on Aging   | 5.00                           | \$137,123                | \$53,664            | \$190,787               | \$577                       |
| Climate Change Institute                                | 8.94                           | \$2,572,110              | \$40,763            | \$2,612,873             | \$761,730                   |
| Department of Industrial Cooperation                    | 6.65                           | \$1,459,710              | \$1,845,577         | \$3,305,287             | \$111,247                   |
| Laboratory for Surface Science and Technology           | 1.20                           | \$540,282                | \$43,867            | \$584,149               | \$90,778                    |
| Margaret Chase Smith Center                             | 8.63                           | \$1,690,206              | \$269,932           | \$1,960,138             | \$476,908                   |
| NSF EPSCoR Programs                                     | .81                            | \$3,605,250              | \$1,831,043         | \$5,436,293             | \$739,331                   |
| Sea Grant Program                                       | 11.00                          | \$227,105                | \$53,908            | \$281,013               | \$19,992                    |
| Senator George J. Mitchell Center                       | 10.49                          | \$2,098,924              | \$992,854           | \$3,091,777             | \$524,032                   |
| <b>SUBTOTAL:</b>  | 63.04                          | \$18,950,692             | \$6,586,128         | \$25,536,820            | \$3,723,010                 |

Proposals Submitted for FY 2009

| <b>VICE PRESIDENTIAL UNIT / COLLEGE/<br/>DEPARTMENT</b> | <b>Number of<br/>Proposals</b> | <b>Sponsor<br/>Total</b> | <b>UM<br/>Total</b> | <b>Total<br/>Amount</b> | <b>Sponsor<br/>Indirect</b> |
|---|--------------------------------|--------------------------|---------------------|-------------------------|-----------------------------|
| <b><u>VICE PRESIDENT FOR STUDENT AFFAIRS</u></b>        |                                |                          |                     |                         |                             |
| <b><i>STUDENT AFFAIRS</i></b>                           |                                |                          |                     |                         |                             |
| Student Affairs   | 2.00                           | \$103,134                | \$500               | \$103,634               | \$8,990                     |
| Public Safety   | 1.00                           | \$51,975                 | \$0                 | \$51,975                | \$0                         |
| <b>SUBTOTAL:</b>  | <b>3.00</b>                    | <b>\$155,109</b>         | <b>\$500</b>        | <b>\$155,609</b>        | <b>\$8,990</b>              |
| <b><i>STUDENT HEALTH SERVICES</i></b>                   |                                |                          |                     |                         |                             |
| Cutler Health Center                                    | 2.00                           | \$126,441                | \$128,729           | \$255,170               | \$20,278                    |
| <b>SUBTOTAL:</b>  | <b>2.00</b>                    | <b>\$126,441</b>         | <b>\$128,729</b>    | <b>\$255,170</b>        | <b>\$20,278</b>             |
| <b><u>Totals for FY 2009</u></b>                        |                                |                          |                     |                         |                             |
| Number of Proposals Submitted:                          | 677                            |                          |                     |                         |                             |
| Requested from Sponsors:                                |                                | \$272,574,185            |                     |                         |                             |
| Proposed Cost Sharing:                                  |                                | \$75,526,015             |                     |                         |                             |
| Proposed Project Costs:                                 |                                | \$348,100,200            |                     |                         |                             |
| <i>Proposed Indirect Costs:</i>                         |                                | \$47,768,517             |                     |                         |                             |

**SUMMARY OF PROPOSALS SUBMITTED  
ORGANIZED BY RESEARCH UNITS FY 2009**

| <b>RESEARCH UNIT</b>                                  | <b>NUMBER OF PROPOSALS</b> | <b>TOTAL REQUESTED FROM SPONSOR</b> | <b>TOTAL REQUESTED FROM UM</b> | <b>TOTAL PROJECT REQUEST</b> | <b>REQUESTED SPONSOR INDIRECT</b> |
|---|----------------------------|-------------------------------------|--------------------------------|------------------------------|-----------------------------------|
| Advanced Engineered Wood Composites Center            | 15                         | \$12,784,623                        | \$1,122,328                    | \$13,906,951                 | \$1,540,254                       |
| Center for Community Inclusion and Disability Studies | 20                         | \$5,095,984                         | \$815,081                      | \$5,911,065                  | \$459,744                         |
| Center for Cooperative Aquaculture Research           | 4                          | \$4,644,568                         | \$934,657                      | \$5,579,225                  | \$910,097                         |
| Center for Research on Sustainable Forests            | 3                          | \$187,496                           | \$57,163                       | \$244,659                    | \$4,145                           |
| Center for Science and Mathematics Education Research | 5                          | \$3,916,444                         | \$854,826                      | \$4,771,270                  | \$289,899                         |
| Center for Tourism Research and Outreach              | 3                          | \$360,869                           | \$17,788                       | \$378,657                    | \$81,472                          |
| Center on Aging                                       | 19                         | \$2,751,797                         | \$516,227                      | \$3,268,024                  | \$184,229                         |
| Climate Change Institute                              | 27                         | \$6,291,564                         | \$329,327                      | \$6,620,891                  | \$1,647,415                       |
| Cold Water Aquaculture Research Facility              | 1                          | \$12,500                            | \$29,217                       | \$41,717                     | \$0                               |
| Forest Bioproducts Research Project                   | 5                          | \$7,955,053                         | \$4,013,039                    | \$11,968,092                 | \$851,926                         |
| Institute for Molecular Biophysics                    | 6                          | \$1,774,856                         | \$22,514                       | \$1,797,370                  | \$446,151                         |
| Laboratory for Surface Science and Technology         | 9                          | \$4,555,367                         | \$62,667                       | \$4,618,034                  | \$1,093,380                       |
| Maine Agriculture and Forestry Experiment Station     | 60                         | \$15,911,650                        | \$6,880,466                    | \$22,792,116                 | \$2,248,913                       |

|   |            |                      |                     |                      |                     |
|---|------------|----------------------|---------------------|----------------------|---------------------|
| Margaret Chase Smith Center                             | 11         | \$1,917,790          | \$30,624            | \$1,948,414          | \$515,570           |
| National Center for Geographic Information and Analysis | 4          | \$2,767,876          | \$0                 | \$2,767,876          | \$847,411           |
| NSF EPSCoR Programs                                     | 3          | \$22,250,000         | \$11,147,407        | \$33,397,407         | \$5,238,968         |
| School of Forest Resources                              | 17         | \$1,956,044          | \$460,885           | \$2,416,929          | \$306,805           |
| School of Marine Sciences                               | 72         | \$29,334,436         | \$18,136,038        | \$47,470,474         | \$5,502,829         |
| Sea Grant Program                                       | 13         | \$242,752            | \$51,114            | \$293,866            | \$22,417            |
| Senator George J. Mitchell Center                       | 15         | \$464,785            | \$249,510           | \$714,295            | \$84,138            |
| Wabanaki Center   | 2          | \$914,530            | \$886               | \$915,416            | \$179,630           |
| <b>TOTALS</b>   | <b>314</b> | <b>\$126,090,984</b> | <b>\$45,731,764</b> | <b>\$171,822,748</b> | <b>\$22,455,393</b> |

**RESEARCH AND SPONSORED PROGRAMS  
REPORT OF EXTRAMURAL ACTIVITY  
AWARDS RECEIVED FOR FY 2009**

| Name   | Title   | Sponsor                                     | Sponsor<br>Total | UM<br>Total | Total<br>Amount | <i>Sponsor<br/>Indirect</i> |
|--|---|---|------------------|-------------|-----------------|-----------------------------|
| <b>VICE PRESIDENT FOR ACADEMIC AFFAIRS</b>           |   |   |                  |             |                 |                             |
| <b>ACADEMIC AFFAIRS</b>                              |   |   |                  |             |                 |                             |
| Hunter, S.   | College Success Grant +\$   | MELMAC Education Foundation                 | \$50,000         | \$0         | \$50,000        | \$0                         |
| Hunter, S.   | College Success Grant +\$   | MELMAC Education Foundation                 | \$50,000         | \$0         | \$50,000        | \$0                         |
|  | <b>SUBTOTALS: NUMBER OF AWARDS:</b>   | 2.00  | \$100,000        | \$0         | \$100,000       | \$0                         |
| <b>COLLEGE OF BUSINESS, PUBLIC POLICY AND HEALTH</b> |   |   |                  |             |                 |                             |
| <b>Maine Business School</b>                         |   |   |                  |             |                 |                             |
| Daniel, H.   | Proposal to Continue<br>Enhancing Contribution to<br>Maine's Tourism Industry | ME Dept Economic &<br>Community Development | \$100,000        | \$8,314     | \$108,314       | \$8,314                     |
|  | <b>SUBTOTALS: NUMBER OF AWARDS:</b>   | 0.50  | \$100,000        | \$8,314     | \$108,314       | \$8,314                     |
| <b>Public Administration</b>                         |   |   |                  |             |                 |                             |
| Nichols, K.  | Road Salt Risk Assessment   | ME Dept of Transportation                   | \$8,704          | \$1,622     | \$10,326        | \$1,622                     |
|  | <b>SUBTOTALS: NUMBER OF AWARDS:</b>   | 0.10  | \$8,704          | \$1,622     | \$10,326        | \$1,622                     |
| <b>School of Economics (BPPH)</b>                    |   |   |                  |             |                 |                             |
| Noblet, C.   | Marketing New England<br>Biofuels To Ensure Energy<br>Security                | US Dept of Transportation                   | \$39,979         | \$8,877     | \$48,856        | \$7,996                     |
| Noblet, C.   | Stonington Fisheries Industry<br>Economic Impact                              | US Dept of Housing and Urban<br>Development | \$6,747          | \$1,294     | \$8,041         | \$1,300                     |

Awards Received for FY 2009

| <b>Name</b>                  | <b>Title</b>   | <b>Sponsor</b>                        | <b>Sponsor<br/>Total</b> | <b>UM<br/>Total</b> | <b>Total<br/>Amount</b> | <b>Sponsor<br/>Indirect</b> |
|------------------------------|--|---------------------------------------|--------------------------|---------------------|-------------------------|-----------------------------|
|                              | <b>SUBTOTALS: NUMBER OF AWARDS:</b>  | 0.90                                  | \$46,726                 | \$10,171            | \$56,897                | \$9,295                     |
| <b>School of Social Work</b> |  |                                       |                          |                     |                         |                             |
| Day, K.                      | Maine Citizen Review Panel-<br>Casey Family Services 2009-<br>2010           | Casey Family Services                 | \$5,500                  | \$313               | \$5,813                 | \$313                       |
| DePoy, E.                    | HRTW & Integrated Services<br>for Children with Special<br>Health Care Needs | US Dept of Health & Human<br>Services | \$52,000                 | \$6,145             | \$58,145                | \$0                         |
| Gilson, S.                   | Tobacco Cessation Access<br>Portal (TAP)                                     | American Legacy Foundation            | \$50,000                 | \$50,668            | \$100,668               | \$3,407                     |
| Kaye, L.                     | 2008 Mental Health TIP Grant   | Boston University                     | \$1,000                  | \$0                 | \$1,000                 | \$0                         |
| Kaye, L.                     | BSW Experimental Learning<br>(BEL) Program                                   | Council on Social Work<br>Education   | \$7,500                  | \$35,840            | \$43,340                | \$338                       |
| Kaye, L.                     | Family Connections to<br>Resources Project Evaluation<br>Yrs 3 & 4           | US Dept of Health & Human<br>Services | \$20,000                 | \$4,000             | \$24,000                | \$1,818                     |
| Kaye, L.                     | How to Operate a Rural Rapp<br>Program                                       | Brookdale Foundation                  | \$16,000                 | \$18,326            | \$34,326                | \$0                         |
| Kaye, L.                     | Maine Primary Care<br>Association Behavioral Health<br>Evaluation            | Maine Primary Care Association        | \$10,000                 | \$4,319             | \$14,319                | \$1,304                     |
| Kaye, L.                     | Maine Rural RAPP Outreach<br>Program   | Brookdale Foundation                  | \$6,000                  | \$20,892            | \$26,892                | \$0                         |
| Kaye, L.                     | Maine Senior Environmental<br>Leadership Corps                               | US Environmental Protection<br>Agency | \$94,100                 | \$18,044            | \$112,144               | \$18,198                    |
| Kaye, L.                     | NCoA Multi-Generational &<br>Civic Engagement Initiative                     | National Council on Aging             | \$22,000                 | \$9,194             | \$31,194                | \$2,599                     |
| Kaye, L.                     | Safe Medicine Disposal for<br>ME Subcontract                                 | ME Dept of Public Safety              | \$150,000                | \$17,488            | \$167,488               | \$17,489                    |

Awards Received for FY 2009

| <b>Name</b>                         | <b>Title</b>  | <b>Sponsor</b>                     | <b>Sponsor Total</b> | <b>UM Total</b> | <b>Total Amount</b> | <b>Sponsor Indirect</b> |
|-------------------------------------|---|------------------------------------|----------------------|-----------------|---------------------|-------------------------|
| Russel, R.                          | Guardian Ad Litem Field Education Unit                              | Maine Community Foundation         | \$6,413              | \$6,273         | \$12,686            | \$581                   |
| Russel, R.                          | Legal Services for the Elderly Social Work MSW Field Unit           | Maine Bar Foundation               | \$4,950              | \$5,097         | \$10,047            | \$585                   |
| Russel, R.                          | Maine DHHS Child Welfare Coordinator Contract                       | US Dept of Health & Human Services | \$115,558            | \$13,100        | \$128,658           | \$13,100                |
| Russel, R.                          | Maine DHHS Child Welfare Coordinator Contract (CANN Conference) +\$ | US Dept of Health & Human Services | \$15,000             | \$1,087         | \$16,087            | \$1,087                 |
| <b>SUBTOTALS: NUMBER OF AWARDS:</b> |   | 16.00                              | \$576,021            | \$210,786       | \$786,807           | \$60,819                |

**COLLEGE OF EDUCATION AND HUMAN DEVELOPMENT**

|               |  |  |           |          |           |          |
|---------------|--|--|-----------|----------|-----------|----------|
| Allan, E.     | Examining and Transforming Campus Hazing Cultures Phases II I#8  | North American Interfraternal Foundation | \$17,386  | \$8,432  | \$25,818  | \$0      |
| Allan, E.     | Examining and Transforming Campus Hazing Cultures Phases II I#9  | North American Interfraternal Foundation | \$17,386  | \$8,432  | \$25,818  | \$0      |
| Allan, E.     | National Hazing Study Data Analysis                              | Gordie Foundation                        | \$5,000   | \$13,400 | \$18,400  | \$0      |
| Artesani, J.  | Institute for the Study of Students at Risk                      | US Dept of Education                     | \$269,667 | \$45,810 | \$315,477 | \$19,975 |
| Bird, M.      | Unifying Themes and Forests: Taking Advantage of Maine Resources | US Dept of Education                     | \$23,206  | \$387    | \$23,592  | \$1,138  |
| Colannino, R. | Classic Upward Bound 2009-2010                                   | US Dept of Education                     | \$285,500 | \$0      | \$285,500 | \$15,584 |
| Colannino, R. | Upward Bound Math-Science Program 2008 - 2013                    | US Dept of Education                     | \$297,034 | \$0      | \$297,034 | \$18,303 |
| Doore, B.     | Waldo County Evaluation Summer 2008                              | Broadreach Family & Community Services   | \$16,685  | \$1,972  | \$18,657  | \$1,971  |

Awards Received for FY 2009

| <b>Name</b> | <b>Title</b>                                    | <b>Sponsor</b>                          | <b>Sponsor Total</b> | <b>UM Total</b> | <b>Total Amount</b> | <b>Sponsor Indirect</b> |
|-------------|---|---|----------------------|-----------------|---------------------|-------------------------|
| Doore, B.   | Waldo County Preschool Evaluation 2006-2009 +\$ | US Dept of Education                    | \$30,000             | \$4,138         | \$34,138            | \$4,138                 |
| Harris, W.  | High School Accreditation: Costs and Benefits   | Penquis Superintendents Association     | \$7,500              | \$1,476         | \$8,976             | \$1,476                 |
| Harris, W.  | Institute for the Study of Students At Risk     | US Dept of Education                    | \$245,000            | \$1,600         | \$246,600           | \$16,666                |
| Harris, W.  | Maine Education Policy Research Institute       | Maine State Legislature                 | \$125,000            | \$36,212        | \$161,212           | \$14,770                |
| Harris, W.  | Maine Education Policy Research Institute 07-08 | Maine Legislative Council               | \$112,500            | \$38,407        | \$150,907           | \$15,518                |
| Harris, W.  | Maine Education Policy Research Institute 08-09 | Maine State Legislature                 | \$125,000            | \$34,849        | \$159,849           | \$14,771                |
| Harris, W.  | Maine Reading First Program 2008-2009           | US Dept of Education                    | \$50,365             | \$5,950         | \$56,315            | \$5,952                 |
| Harris, W.  | Maine School of Science and Mathematics         | Maine School of Science and Mathematics | \$35,660             | \$7,018         | \$42,678            | \$7,017                 |
| Harris, W.  | River Coalition: Community Themes and Strengths | River Coalition                         | \$1,124              | \$133           | \$1,256             | \$133                   |
| Harris, W.  | School District Reorganization Study            | ME Dept of Education                    | \$105,459            | \$12,462        | \$117,921           | \$12,461                |
| Hart, S.    | River Coalition: Community Themes and Strengths | River Coalition                         | \$21,349             | \$2,523         | \$23,873            | \$2,522                 |
| Hawkes, K.  | Sports Done Right: A Call to Action             | US Dept of Education                    | \$140,502            | \$0             | \$140,502           | \$10,408                |
| Kent, R.    | Maine Writing Project                           | US Dept of Education                    | \$80,000             | \$111,229       | \$191,229           | \$0                     |
| Kent, R.    | Maine Writing Project 2009                      | US Dept of Education                    | \$78,000             | \$109,071       | \$187,071           | \$0                     |
| Liu, X.     | SAMHSA Youth Suicide Enhanced Evaluation        | ME Dept of Health and Human Services    | \$18,750             | \$1,093         | \$19,843            | \$1,093                 |
| Madden, M.  | Caring About Lives in Maine Project Evaluation  | ME Dept of Health and Human Services    | \$85,000             | \$10,044        | \$95,044            | \$10,044                |

Awards Received for FY 2009

| <b>Name</b>  | <b>Title</b>  | <b>Sponsor</b>                           | <b>Sponsor Total</b> | <b>UM Total</b> | <b>Total Amount</b> | <b>Sponsor Indirect</b> |
|--------------|---|--|----------------------|-----------------|---------------------|-------------------------|
| Madden, M.   | Examining and Transforming Campus Hazing Cultures Phases II I#8 | North American Interfraternal Foundation | \$17,386             | \$8,432         | \$25,818            | \$0                     |
| Madden, M.   | Examining and Transforming Campus Hazing Cultures Phases II I#9 | North American Interfraternal Foundation | \$17,386             | \$8,432         | \$25,818            | \$0                     |
| Madden, M.   | SAMHSA Youth Suicide Enhanced Evaluation                        | ME Dept of Health and Human Services     | \$56,250             | \$3,279         | \$59,529            | \$3,279                 |
| Madden, M.   | SAMHSA Youth Suicide Enhanced Evaluation +\$                    | US Dept of Health & Human Services       | \$32,910             | \$3,889         | \$36,799            | \$3,889                 |
| Mason, C.    | Biobehavioral Informatics for Newborn Screening 2008-2009/CDC   | US Dept of Health & Human Services       | \$16,220             | \$1,917         | \$18,137            | \$1,917                 |
| Mason, C.    | Biobehavioral Informatics for Newborn Screening 2008-2009/HRSA  | US Dept of Health & Human Services       | \$14,000             | \$1,654         | \$15,654            | \$1,654                 |
| Mason, C.    | Childcare Research & Data Capacity Report 2007-2008             | ME Dept of Health and Human Services     | \$42,687             | \$8,332         | \$51,019            | \$8,331                 |
| Mason, C.    | Childcare Research and Data Capacity Report 2008-2009           | US Dept of Health & Human Services       | \$36,871             | \$7,256         | \$44,126            | \$7,256                 |
| Mason, C.    | Childcare Research and Data Capacity Report 2008-2009 +\$       | US Dept of Health & Human Services       | \$3,662              | \$714           | \$4,376             | \$715                   |
| Mason, C.    | Electronic Birth Defects Registry                               | US Dept of Health & Human Services       | \$3,000              | \$918           | \$3,918             | \$371                   |
| Megquier, D. | Maine Educational Opportunity Center 2006-2011 - Yr 2           | US Dept of Education                     | \$680,609            | \$0             | \$680,609           | \$50,415                |
| Megquier, D. | Maine Educational Talent Search 2006-2011 Yr 2                  | US Dept of Education                     | \$548,052            | \$0             | \$548,052           | \$37,797                |
| Megquier, D. | Montana Talent Search Database Project 2006-2011 Incr. #2       | US Dept of Education                     | \$7,000              | \$0             | \$7,000             | \$0                     |

Awards Received for FY 2009

| <b>Name</b>  | <b>Title</b>  | <b>Sponsor</b>                       | <b>Sponsor Total</b> | <b>UM Total</b> | <b>Total Amount</b> | <b>Sponsor Indirect</b> |
|--------------|---|--------------------------------------|----------------------|-----------------|---------------------|-------------------------|
| Megquier, D. | Montana Talent Search Database Project 2006-2011 Incr. #3             | US Dept of Education                 | \$7,000              | \$0             | \$7,000             | \$0                     |
| Parks, A.    | Student Achievement Grant for Education 2008-2009                     | US Dept of Education                 | \$562,311            | \$32,010        | \$594,321           | \$36,910                |
| Tu, S.       | Biobehavioral Informatics for Newborn Screening 2008-2009/CDC         | US Dept of Health & Human Services   | \$64,882             | \$7,666         | \$72,548            | \$7,667                 |
| Tu, S.       | Biobehavioral Informatics for Newborn Screening 2008-2009/CDC +\$     | ME Dept of Health and Human Services | \$7,914              | \$935           | \$8,849             | \$935                   |
| Tu, S.       | Biobehavioral Informatics for Newborn Screening 2008-2009/HRSA        | US Dept of Health & Human Services   | \$56,000             | \$6,618         | \$62,618            | \$6,617                 |
| Tu, S.       | Biobehavioral Informatics for Newborn Screening 2008-2009/HRSA +\$    | ME Dept of Health and Human Services | \$7,914              | \$935           | \$8,849             | \$935                   |
| Tu, S.       | Electronic Birth Defects Registry                                     | US Dept of Health & Human Services   | \$12,002             | \$3,671         | \$15,673            | \$1,483                 |
| Wingo, L.    | Classic Upward Bound 2009-2010  | US Dept of Education                 | \$285,500            | \$0             | \$285,500           | \$15,584                |
| Zeph, L.     | Child Care Plus Maine Project 07/08 +\$                               | US Dept of Health & Human Services   | \$60,000             | \$8,276         | \$68,276            | \$8,276                 |
| Zeph, L.     | Child Care Plus Maine Project 2008-2009                               | US Dept of Health & Human Services   | \$638,286            | \$72,528        | \$710,814           | \$72,529                |
| Zeph, L.     | Early Reading First: Portland Early Literacy Collaborative, 2008-2009 | US Dept of Education                 | \$131,685            | \$22,923        | \$154,608           | \$9,754                 |
| Zeph, L.     | LEARNS 2008-2009  | US Dept of Education                 | \$615,430            | \$109,143       | \$724,573           | \$44,000                |
| Zeph, L.     | LEARNS 2007-2008  | US Dept of Education                 | \$623,209            | \$110,523       | \$733,732           | \$44,556                |

Awards Received for FY 2009

| <b>Name</b>                         | <b>Title</b>   | <b>Sponsor</b>                                     | <b>Sponsor Total</b> | <b>UM Total</b>    | <b>Total Amount</b> | <b>Sponsor Indirect</b> |
|-------------------------------------|--|--|----------------------|--------------------|---------------------|-------------------------|
| Zeph, L.                            | Maine Employment Curriculum Implementation Project 08/09 | US Dept of Health & Human Services                 | \$77,940             | \$7,631            | \$85,571            | \$7,630                 |
| Zeph, L.                            | Tanzania Grantsmanship Workshop                          | United States Agency for International Development | \$49,998             | \$0                | \$49,998            | \$7,154                 |
| Zeph, L.                            | UCEDD Core Renewal 2009                                  | US Dept of Health & Human Services                 | \$528,000            | \$186,949          | \$714,949           | \$0                     |
| <b>SUBTOTALS: NUMBER OF AWARDS:</b> |  | 43.00  | <u>\$7,397,174</u>   | <u>\$1,069,268</u> | <u>\$8,466,442</u>  | <u>\$553,592</u>        |

**COLLEGE OF ENGINEERING**

**Chemical and Biological Engineering**

|              |  |                             |             |           |             |           |
|--------------|--|-----------------------------|-------------|-----------|-------------|-----------|
| Bennett, P.  | Summer Institute in Pulp and Paper Process Technology                          | National Science Foundation | \$17,230    | \$0       | \$17,230    | \$809     |
| Bilodeau, M. | Forest and Ag Bioproducts Research, Development and Commercialization Facility | Maine Technology Institute  | \$2,400,000 | \$787,010 | \$3,187,010 | \$0       |
| Bilodeau, M. | Study Options for Blind to Denominate US Currency I#2                          | US Treasury Department      | \$9,930     | \$0       | \$9,930     | \$3,246   |
| Bilodeau, M. | Study Options for Blind to Denominate US Currency I#3                          | US Treasury Department      | \$4,264     | \$0       | \$4,264     | \$1,393   |
| Bilodeau, M. | Summer Institute in Pulp and Paper Process Technology                          | National Science Foundation | \$5,639     | \$0       | \$5,639     | \$265     |
| Bilodeau, M. | University of Maine Integrated Forest Biorefinery Research                     | US Dept of Energy           | \$478,000   | \$0       | \$478,000   | \$155,112 |
| Bilodeau, M. | VPP Consortium Mixed Hardwood Study Yr 2                                       | US Dept of Agriculture      | \$12,000    | \$5,820   | \$17,820    | \$0       |
| Donahue, D.  | Explore It! Building the Next Generation of Sustainable Energy Researchers +\$ | National Science Foundation | \$7,000     | \$0       | \$7,000     | \$963     |

Awards Received for FY 2009

| <b>Name</b>  | <b>Title</b>  | <b>Sponsor</b>              | <b>Sponsor Total</b> | <b>UM Total</b> | <b>Total Amount</b> | <b>Sponsor Indirect</b> |
|--------------|---|-----------------------------|----------------------|-----------------|---------------------|-------------------------|
| Donahue, D.  | Explore It! Building the Next Generation of Sustainable Energy Researchers Yr 3 | National Science Foundation | \$40,393             | \$0             | \$40,393            | \$5,788                 |
| Genco, J.    | Study Options for Blind to Denominate US Currency I#2                           | US Treasury Department      | \$9,930              | \$0             | \$9,930             | \$3,246                 |
| Genco, J.    | Study Options for Blind to Denominate US Currency I#3                           | US Treasury Department      | \$4,264              | \$0             | \$4,264             | \$1,393                 |
| Genco, J.    | Technologies and Processes for the Conversion of Cellulosic Materials           | US Dept of Defense          | \$50,665             | \$0             | \$50,665            | \$16,497                |
| Neivandt, D. | Explore It! Building the Next Generation of Sustainable Energy Researchers +\$  | National Science Foundation | \$7,000              | \$0             | \$7,000             | \$963                   |
| Neivandt, D. | Explore It! Building the Next Generation of Sustainable Energy Researchers Yr 3 | National Science Foundation | \$40,393             | \$0             | \$40,393            | \$5,788                 |
| Neivandt, D. | EXP-SA:Lateral Field Excited Acoustic Wave Sensor for Peroxide-Based Explos +\$ | National Science Foundation | \$1,800              | \$0             | \$1,800             | \$0                     |
| Pendse, H.   | Forest and Ag Bioproducts Research, Development and Commercialization Facility  | Maine Technology Institute  | \$1,200,000          | \$393,505       | \$1,593,505         | \$0                     |
| Pendse, H.   | Summer Institute in Pulp and Paper Process Technology                           | National Science Foundation | \$8,458              | \$0             | \$8,458             | \$397                   |
| Pendse, H.   | Technologies and Processes for the Conversion of Cellulosic Materials           | US Dept of Defense          | \$101,331            | \$0             | \$101,331           | \$32,995                |
| Pendse, H.   | University of Maine Integrated Forest Biorefinery Research                      | US Dept of Energy           | \$478,000            | \$0             | \$478,000           | \$155,112               |
| Pendse, H.   | VPP Consortium Mixed Hardwood Study Yr 2  | US Dept of Agriculture      | \$24,000             | \$11,640        | \$35,640            | \$0                     |

Awards Received for FY 2009

| <b>Name</b>                                | <b>Title</b>   | <b>Sponsor</b>              | <b>Sponsor Total</b> | <b>UM Total</b> | <b>Total Amount</b> | <b>Sponsor Indirect</b> |
|--|--|-----------------------------|----------------------|-----------------|---------------------|-------------------------|
| Ruthven, D.                                | GOALI: Multicomponent Molecular Transport in Nanoporous Materials Yr 3           | National Science Foundation | \$139,377            | \$0             | \$139,377           | \$14,843                |
| Van Heiningen, A.                          | VPP Consortium Mixed Hardwood Study Yr 2   | US Dept of Agriculture      | \$24,000             | \$11,640        | \$35,640            | \$0                     |
| van Walsum, P.                             | Characterization of Accumulation Trends for Carbohydrate                         | US Dept of Agriculture      | \$16,829             | \$0             | \$16,829            | \$3,366                 |
| van Walsum, P.                             | Identification and Quantification of Cellulase and Microbial Inhibitors          | US Dept of Agriculture      | \$146,092            | \$0             | \$146,092           | \$29,218                |
| van Walsum, P.                             | Production of Higher Alcohol Liquid Biofuels via Acidogenic Digestion            | US Dept of Energy           | \$427,640            | \$112,952       | \$540,593           | \$122,115               |
| van Walsum, P.                             | Technologies and Processes for the Conversion of Cellulosic Materials            | US Dept of Defense          | \$50,665             | \$0             | \$50,665            | \$16,497                |
| Wheeler, C.                                | Production of Higher Alcohol Liquid Biofuels via Acidogenic Digestion            | US Dept of Energy           | \$285,094            | \$75,302        | \$360,395           | \$81,410                |
| Wheeler, C.                                | Technologies and Processes for the Conversion of Cellulosic Materials            | US Dept of Defense          | \$50,665             | \$0             | \$50,665            | \$16,497                |
| <b>SUBTOTALS: NUMBER OF AWARDS:</b>        |  | 12.45                       | \$6,040,659          | \$1,397,869     | \$7,438,528         | \$667,913               |
| <b>Civil and Environmental Engineering</b> |  |                             |                      |                 |                     |                         |
| Amirbahman, A.                             | A Sequential Time-weighted Average Monitoring Approach for Monitoring Pesticides | US Dept of the Interior     | \$6,000              | \$23,800        | \$29,800            | \$0                     |
| Amirbahman, A.                             | IPA Agreement (Matthias Kohler)  | US Dept of the Interior     | \$18,788             | \$0             | \$18,788            | \$0                     |

Awards Received for FY 2009

| <b>Name</b>    | <b>Title</b>  | <b>Sponsor</b>                              | <b>Sponsor Total</b> | <b>UM Total</b> | <b>Total Amount</b> | <b>Sponsor Indirect</b> |
|----------------|---|---|----------------------|-----------------|---------------------|-------------------------|
| Amirbahman, A. | IPA Agreement (Matthias Kohler)   | US Dept of the Interior                     | \$27,681             | \$0             | \$27,681            | \$0                     |
| Amirbahman, A. | IPA Assignment (Matthias Kohler)  | US Dept of the Interior                     | \$13,541             | \$0             | \$13,541            | \$0                     |
| Amirbahman, A. | IPA Assignment (Matthias Kohler)  | US Dept of the Interior                     | \$11,117             | \$0             | \$11,117            | \$0                     |
| Amirbahman, A. | IPA Assignment (Matthias Kohler)  | US Dept of the Interior                     | \$15,564             | \$0             | \$15,564            | \$0                     |
| Amirbahman, A. | Mercury Dynamics in Estuarine Sediments   | US Dept of Commerce                         | \$34,113             | \$0             | \$34,113            | \$11,141                |
| Dagher, H.     | Advanced Nanocomposites for the Renewable Energy Industry                         | Maine Technology Institute                  | \$1,649,822          | \$800,164       | \$2,449,985         | \$0                     |
| Dagher, H.     | Concrete Filled Tubular FRP Arch Bridges  | ME Dept of Transportation                   | \$75,975             | \$14,955        | \$90,930            | \$14,955                |
| Dagher, H.     | Support for Infusing Large (up to 140 ft) Composite Vessels                       | US Dept of Defense                          | \$350,000            | \$0             | \$350,000           | \$108,523               |
| Dagher, H.     | Wood Utilization Research 2008  | US Dept of Agriculture                      | \$68,440             | \$0             | \$68,440            | \$0                     |
| Davids, W.     | Developing of a Lunar Outpost Wireless Monitoring & Analysis System (LOWMAS Yr 2) | National Aeronautics & Space Administration | \$5,999              | \$6,669         | \$12,667            | \$888                   |
| Garder, P.     | Clear Roads' Safety Effect on Elderly Drivers                                     | New England Transportation Consortium       | \$63,471             | \$63,608        | \$127,079           | \$20,873                |
| Garder, P.     | Road Salt Risk Assessment   | ME Dept of Transportation                   | \$17,408             | \$3,244         | \$20,652            | \$3,244                 |
| Jain, S.       | Sustainable Water Allocation and Rulemaking for Maine's Surface Waters:           | US Dept of the Interior                     | \$10,106             | \$57,925        | \$68,031            | \$0                     |

Awards Received for FY 2009

| <b>Name</b>                                | <b>Title</b>   | <b>Sponsor</b>                              | <b>Sponsor Total</b> | <b>UM Total</b>  | <b>Total Amount</b> | <b>Sponsor Indirect</b> |
|--|--|---|----------------------|------------------|---------------------|-------------------------|
| Jain, S.                                   | Variability of Warm Season Floods in the Southwest United States                 | US Dept of Commerce                         | \$46,477             | \$0              | \$46,477            | \$14,285                |
| Landis, E.                                 | X-Ray CT Analysis of Cement-Based Materials                                      | US Dept of Defense                          | \$58,527             | \$0              | \$58,527            | \$17,274                |
| MacRae, J.                                 | The Role of Social Capital, Trust and Learning in Solving Groundwater Quality    | US Dept of Agriculture                      | \$111,000            | \$0              | \$111,000           | \$22,200                |
| Rock, C.                                   | Maine Space Grant Consortium Scholarship Program 2009                            | National Aeronautics & Space Administration | \$5,000              | \$5,000          | \$10,000            | \$0                     |
| <b>SUBTOTALS: NUMBER OF AWARDS:</b>        |  | 14.26                                       | <u>\$2,589,028</u>   | <u>\$975,364</u> | <u>\$3,564,392</u>  | <u>\$213,382</u>        |
| <b>Electrical and Computer Engineering</b> |  |   |                      |                  |                     |                         |
| Abedi, A.                                  | Battery-Free Wireless Communication System for Harsh Environments Yr 2           | National Aeronautics & Space Administration | \$25,000             | \$33,578         | \$58,578            | \$4,386                 |
| Abedi, A.                                  | Developing of a Lunar Outpost Wireless Monitoring & Analysis System (LOWMAS Yr 2 | National Aeronautics & Space Administration | \$14,996             | \$16,672         | \$31,668            | \$2,219                 |
| Abedi, A.                                  | Flight Test of Wireless Accelerometer Array Using Aerospike Rocket               | National Aeronautics & Space Administration | \$20,000             | \$18,740         | \$38,740            | \$4,000                 |
| Abedi, A.                                  | I Mentor K-12 Students (iMeK)  | National Aeronautics & Space Administration | \$5,000              | \$4,892          | \$9,892             | \$0                     |
| Abedi, A.                                  | Real-time Wireless Shape Monitoring of Space Structures                          | National Aeronautics & Space Administration | \$123,890            | \$126,585        | \$250,475           | \$35,814                |
| Abedi, A.                                  | Signal to Noise Ratio of Event-Related EEG Signals in High Risk Newborns         | National Aeronautics & Space Administration | \$2,500              | \$4,717          | \$7,217             | \$500                   |

Awards Received for FY 2009

| <b>Name</b>          | <b>Title</b>   | <b>Sponsor</b>                              | <b>Sponsor Total</b> | <b>UM Total</b> | <b>Total Amount</b> | <b>Sponsor Indirect</b> |
|----------------------|--|---|----------------------|-----------------|---------------------|-------------------------|
| Emanetoglu, N.       | Instrumentation for RF Photonics Laboratory at the University of Maine           | US Dept of Defense                          | \$125,715            | \$0             | \$125,715           | \$0                     |
| Emanetoglu, N.       | Maine Nanofabrication R&D Infrastructure   | Maine Technology Institute                  | \$96,000             | \$56,575        | \$152,575           | \$0                     |
| Emanetoglu, N.       | REU Site: Sensor Science and Engineering   | National Science Foundation                 | \$50,168             | \$0             | \$50,168            | \$7,500                 |
| Hummels, D.          | Surface Acoustic Wave Sensors for Turbine Engines Yr 2 I#1                       | US Dept of Defense                          | \$38,000             | \$0             | \$38,000            | \$12,130                |
| Hummels, D.          | Surface Acoustic Wave Sensors for Turbine Engines Yr 2 I#2                       | US Dept of Defense                          | \$10,136             | \$0             | \$10,136            | \$3,310                 |
| Kotecki, D.          | Maine Nanofabrication R&D Infrastructure   | Maine Technology Institute                  | \$96,000             | \$56,575        | \$152,575           | \$0                     |
| Pereira da Cunha, M. | Battery-Free Wireless Communication System for Harsh Environments Yr 2           | National Aeronautics & Space Administration | \$25,000             | \$33,578        | \$58,578            | \$4,386                 |
| Pereira da Cunha, M. | Developing of a Lunar Outpost Wireless Monitoring & Analysis System (LOWMAS Yr 2 | National Aeronautics & Space Administration | \$5,999              | \$6,669         | \$12,667            | \$888                   |
| Pereira da Cunha, M. | LGX High Temperature Acoustic Wave Sensors                                       | US Dept of Defense                          | \$660,500            | \$40,510        | \$701,010           | \$182,520               |
| Pereira da Cunha, M. | Real-time Wireless Shape Monitoring of Space Structures                          | National Aeronautics & Space Administration | \$49,556             | \$50,634        | \$100,190           | \$14,326                |
| Pereira da Cunha, M. | Surface Acoustic Wave Sensors for Turbine Engines Yr 2 I#1                       | US Dept of Defense                          | \$114,000            | \$0             | \$114,000           | \$36,391                |
| Pereira da Cunha, M. | Surface Acoustic Wave Sensors for Turbine Engines Yr 2 I#2                       | US Dept of Defense                          | \$30,408             | \$0             | \$30,408            | \$9,931                 |

Awards Received for FY 2009

| <b>Name</b>                         | <b>Title</b>  | <b>Sponsor</b>              | <b>Sponsor Total</b> | <b>UM Total</b>  | <b>Total Amount</b> | <b>Sponsor Indirect</b> |
|-------------------------------------|---|-----------------------------|----------------------|------------------|---------------------|-------------------------|
| Segee, B.                           | REU Site: Supercomputng Undergraduate Program in Maine (SuperME) Yr 2           | National Science Foundation | \$49,992             | \$0              | \$49,992            | \$5,000                 |
| Smith, R.                           | Accelerated Testing of Oxynitride Films for High Temperature Applications       | National Science Foundation | \$150,000            | \$0              | \$150,000           | \$47,024                |
| Smith, R.                           | Maine Nanofabrication R&D Infrastructure  | Maine Technology Institute  | \$96,000             | \$56,575         | \$152,575           | \$0                     |
| Smith, R.                           | MERHAB 2005: Rapid HAB Detection Instrument Development and Deployment Yr 4     | US Dept of Commerce         | \$13,191             | \$0              | \$13,191            | \$4,308                 |
| Smith, R.                           | US-Ireland Partnership Program: Biosafety for EnvironmentalALCOntaminants       | National Science Foundation | \$37,049             | \$0              | \$37,049            | \$11,850                |
| Vetelino, J.                        | EXP-SA:Lateral Field Excited Acoustic Wave Sensor for Peroxide-Based Explos +\$ | National Science Foundation | \$4,200              | \$0              | \$4,200             | \$0                     |
| Vetelino, J.                        | REU Site: Sensor Science and Engineering  | National Science Foundation | \$50,168             | \$0              | \$50,168            | \$7,500                 |
| Vetelino, J.                        | Track II GK12: Sensors! Yr 4  | National Science Foundation | \$236,239            | \$0              | \$236,239           | \$15,570                |
| Zhu, Y.                             | REU Site: Supercomputng Undergraduate Program in Maine (SuperME) Yr 2           | National Science Foundation | \$49,992             | \$0              | \$49,992            | \$5,000                 |
| <b>SUBTOTALS: NUMBER OF AWARDS:</b> |   | 12.75                       | <u>\$2,179,697</u>   | <u>\$506,298</u> | <u>\$2,685,995</u>  | <u>\$414,551</u>        |
| <b>Mechanical Engineering</b>       |   |                             |                      |                  |                     |                         |
| Caccese, V.                         | CAVITATION TESTING FOR THE PROPULSOR BLADE ADVANCED COMPOSITE MATERIALS PROJECT | US Dept of Defense          | \$10,000             | \$0              | \$10,000            | \$3,289                 |

Awards Received for FY 2009

| <b>Name</b>                         | <b>Title</b>   | <b>Sponsor</b>                              | <b>Sponsor Total</b> | <b>UM Total</b>  | <b>Total Amount</b> | <b>Sponsor Indirect</b> |
|-------------------------------------|--|---|----------------------|------------------|---------------------|-------------------------|
| Caccese, V.                         | Developing of a Lunar Outpost Wireless Monitoring & Analysis System (LOWMAS Yr 2 | National Aeronautics & Space Administration | \$14,996             | \$16,672         | \$31,668            | \$2,219                 |
| Caccese, V.                         | Propolsor Blade Advanced Composite Materials Project - Phase 2 +\$               | US Dept of Defense                          | \$10,000             | \$0              | \$10,000            | \$3,288                 |
| Caccese, V.                         | Real-time Wireless Shape Monitoring of Space Structures                          | National Aeronautics & Space Administration | \$37,167             | \$37,976         | \$75,142            | \$10,744                |
| Caccese, V.                         | Space Grant Year 18 Fellowship at the University of Maine                        | National Aeronautics & Space Administration | \$30,000             | \$32,580         | \$62,580            | \$0                     |
| Caccese, V.                         | Vibratory Horn Cavitation Erosion Test - Additional Testing                      | Rolls-Royce Marine Division                 | \$4,172              | \$0              | \$4,172             | \$1,372                 |
| Jin, Z.                             | Developing of a Lunar Outpost Wireless Monitoring & Analysis System (LOWMAS Yr 2 | National Aeronautics & Space Administration | \$5,999              | \$6,669          | \$12,667            | \$888                   |
| Peterson, M.                        | Developing of a Lunar Outpost Wireless Monitoring & Analysis System (LOWMAS Yr 2 | National Aeronautics & Space Administration | \$5,999              | \$6,669          | \$12,667            | \$888                   |
| Shahinpoor, M.                      | Real-time Wireless Shape Monitoring of Space Structures                          | National Aeronautics & Space Administration | \$37,167             | \$37,976         | \$75,142            | \$10,744                |
| Vel, S.                             | Developing of a Lunar Outpost Wireless Monitoring & Analysis System (LOWMAS Yr 2 | National Aeronautics & Space Administration | \$5,999              | \$6,669          | \$12,667            | \$888                   |
| <b>SUBTOTALS: NUMBER OF AWARDS:</b> |  | 4.45  | <u>\$161,497</u>     | <u>\$145,209</u> | <u>\$306,707</u>    | <u>\$34,320</u>         |

Awards Received for FY 2009

| <b>Name</b>  | <b>Title</b>   | <b>Sponsor</b>                        | <b>Sponsor<br/>Total</b> | <b>UM<br/>Total</b> | <b>Total<br/>Amount</b> | <b>Sponsor<br/>Indirect</b> |
|--|--|---------------------------------------|--------------------------|---------------------|-------------------------|-----------------------------|
| <b>Spatial Information Science and Engineering</b> |  |                                       |                          |                     |                         |                             |
| Giudice, N.  | Cyber Enhancement of Spatial Cognition for the Visually Impaired           | National Science Foundation           | \$276,000                | \$0                 | \$276,000               | \$79,073                    |
| Giudice, N.  | Indoor Personal Navigation System for the Blind using Augmented GPS        | Koronis Biomedical Technologies, Inc. | \$15,539                 | \$0                 | \$15,539                | \$5,110                     |
| Giudice, N.  | Spatial Images from Vision, Touch and Hearing in Sighted and Blind         | National Science Foundation           | \$25,215                 | \$0                 | \$25,215                | \$8,292                     |
| Holden, C.   | Track II GK12: Sensors! Yr 4   | National Science Foundation           | \$59,060                 | \$0                 | \$59,060                | \$3,892                     |
| Nittel, S.   | CAREER: Data Management for Ad-Hoc Geosensor Networks 2009                 | National Science Foundation           | \$115,865                | \$0                 | \$115,865               | \$33,644                    |
| Nittel, S.   | Monitoring Dynamic Spatial Fields Using Responsive Geosensor Networks Yr 3 | National Science Foundation           | \$51,928                 | \$0                 | \$51,928                | \$15,221                    |
| Worboys, M.  | Monitoring Dynamic Spatial Fields Using Responsive Geosensor Networks Yr 3 | National Science Foundation           | \$51,928                 | \$0                 | \$51,928                | \$15,221                    |
| <b>SUBTOTALS: NUMBER OF AWARDS:</b>                |  | 5.20                                  | \$595,534                | \$0                 | \$595,534               | \$160,453                   |
| <b>COLLEGE OF LIBERAL ARTS AND SCIENCES</b>        |  |                                       |                          |                     |                         |                             |
| <b>Anthropology</b>                                |  |                                       |                          |                     |                         |                             |
| Acheson, J.  | Evolution of Norms and Conservation Rules in Two Fisheries                 | National Science Foundation           | \$68,756                 | \$0                 | \$68,756                | \$22,456                    |
| Sandweiss, D.                                      | NorthEast Alliance for Graduate Education and the Professoriate Yr 3       | National Science Foundation           | \$99,075                 | \$31,776            | \$130,851               | \$19,601                    |

Awards Received for FY 2009

| Name                                | Title  | Sponsor  | Sponsor Total | UM Total  | Total Amount | Sponsor Indirect |
|-------------------------------------|--|--|---------------|-----------|--------------|------------------|
| <b>SUBTOTALS: NUMBER OF AWARDS:</b> |  | 1.60   | \$167,831     | \$31,776  | \$199,607    | \$42,057         |
| <b>Chemistry</b>                    |  |  |               |           |              |                  |
| Cole, B.                            | Wood Utilization Research 2008   | US Dept of Agriculture                             | \$68,440      | \$0       | \$68,440     | \$0              |
| Collins, S.                         | Maine Nanofabrication R&D Infrastructure   | Maine Technology Institute                         | \$96,000      | \$56,575  | \$152,575    | \$0              |
| Patterson, H.                       | Development and Application of the Polar Organic Chemical Integrative Sampl + \$ | US Environmental Protection Agency                 | \$2,000       | \$970     | \$2,970      | \$0              |
| Patterson, H.                       | Using Flourencece Spectroscopy as a Rapid, to Monitor Pharmaceuticals in Rivers  | US Dept of the Interior                            | \$1,205       | \$44,826  | \$46,031     | \$0              |
| Tripp, C.                           | Collaborative Researcy: A Nanostructure Sensor for Determining Iron              | National Science Foundation                        | \$387,885     | \$0       | \$387,885    | \$110,380        |
| <b>SUBTOTALS: NUMBER OF AWARDS:</b> |  | 2.73   | \$555,530     | \$102,371 | \$657,901    | \$110,380        |
| <b>Communication and Journalism</b> |  |  |               |           |              |                  |
| Grosswiler, P.                      | United States - Tanzania Journalism Exchange Project                             | United States Agency for International Development | \$49,999      | \$0       | \$49,999     | \$7,876          |
| Grosswiler, P.                      | United States - Tanzania Journalism Exchange Project +\$                         | United States Agency for International Development | \$25,000      | \$0       | \$25,000     | \$3,935          |
| Lindenfeld, L.                      | Project Opportunity Yr 2   | US Dept of Education                               | \$74,989      | \$4,703   | \$79,692     | \$3,999          |
| Socolow, M.                         | United States - Tanzania Journalism Exchange Project                             | United States Agency for International Development | \$49,999      | \$0       | \$49,999     | \$7,876          |
| Socolow, M.                         | United States - Tanzania Journalism Exchange Project +\$                         | United States Agency for International Development | \$25,000      | \$0       | \$25,000     | \$3,935          |

Awards Received for FY 2009

| Name  | Title   | Sponsor                     | Sponsor Total | UM Total  | Total Amount | Sponsor Indirect |          |
|---|---|-----------------------------|---------------|-----------|--------------|------------------|----------|
| <b>SUBTOTALS: NUMBER OF AWARDS:</b>         |   |                             | 2.25          | \$224,987 | \$4,703      | \$229,690        | \$27,620 |
| <b>Communication Sciences and Disorders</b> |   |                             |               |           |              |                  |          |
| Smith, S.                                   | Girls 'Get' Tech  | National Science Foundation | \$875         | \$0       | \$875        | \$0              |          |
| <b>SUBTOTALS: NUMBER OF AWARDS:</b>         |   |                             | 1.00          | \$875     | \$0          | \$875            | \$0      |
| <b>Computer Science</b>                     |   |                             |               |           |              |                  |          |
| Fastook, J.                                 | Ross-Sea Outer Continental Shelf Morphology and Near-surface Stratigraphy | National Science Foundation | \$26,266      | \$0       | \$26,266     | \$8,578          |          |
| Fastook, J.                                 | Science and Technology Center: Ice Sheets and Sea Level Rise Yr 4         | National Science Foundation | \$111,548     | \$33,883  | \$145,431    | \$34,730         |          |
| <b>SUBTOTALS: NUMBER OF AWARDS:</b>         |   |                             | 1.50          | \$137,814 | \$33,883     | \$171,697        | \$43,308 |
| <b>History</b>                              |   |                             |               |           |              |                  |          |
| Long, N.                                    | Vietnam Oral History Project  | Henry Luce Foundation       | \$30,000      | \$0       | \$30,000     | \$0              |          |
| Riordan, L.                                 | Loyalism and the American Revolution in Maine                             | Maine Humanities Council    | \$3,500       | \$5,376   | \$8,876      | \$0              |          |
| <b>SUBTOTALS: NUMBER OF AWARDS:</b>         |   |                             | 2.00          | \$33,500  | \$5,376      | \$38,876         | \$0      |
| <b>Maine Folklife Center</b>                |   |                             |               |           |              |                  |          |
| MacDougall, P.                              | Maine Stories of Place  | Maine Humanities Council    | \$4,000       | \$6,148   | \$10,148     | \$0              |          |
| MacDougall, P.                              | Summer Institute for community scholars                                   | Maine Arts Commission       | \$9,996       | \$10,290  | \$20,286     | \$496            |          |
| <b>SUBTOTALS: NUMBER OF AWARDS:</b>         |   |                             | 2.00          | \$13,996  | \$16,438     | \$30,434         | \$496    |

Awards Received for FY 2009

| <b>Name</b>                          | <b>Title</b>   | <b>Sponsor</b>               | <b>Sponsor<br/>Total</b> | <b>UM<br/>Total</b> | <b>Total<br/>Amount</b> | <b>Sponsor<br/>Indirect</b> |
|--------------------------------------|--|------------------------------|--------------------------|---------------------|-------------------------|-----------------------------|
| <b>Mathematics</b>                   |  |                              |                          |                     |                         |                             |
| Donovan, J.                          | Creation, Coordination, & Activation of Resources in Physics and Math Yr 3 | National Science Foundation  | \$58,453                 | \$0                 | \$58,453                | \$18,625                    |
| Khalil, A.                           | Wavelet-Based Image Analysis of Mammograms                                 | Maine Cancer Foundation      | \$73,552                 | \$21,426            | \$94,978                | \$9,594                     |
| Knightly, A.                         | The 2009 Maine/Quebec Number Theory Conference                             | National Science Foundation  | \$6,450                  | \$0                 | \$6,450                 | \$43                        |
| Snyder, W.                           | The 2009 Maine/Quebec Number Theory Conference                             | National Science Foundation  | \$6,450                  | \$0                 | \$6,450                 | \$43                        |
| Speer, N.                            | K-12 Teacher Preparation Initiative in the CIRTL Network                   | National Science Foundation  | \$15,873                 | \$0                 | \$15,873                | \$5,220                     |
| Speer, N.                            | K-12 Teacher Preparation Initiative in the CIRTL Network Yr 2              | National Science Foundation  | \$51,230                 | \$0                 | \$51,230                | \$15,684                    |
| <b>SUBTOTALS: NUMBER OF AWARDS:</b>  |  | 4.25                         | \$212,008                | \$21,426            | \$233,434               | \$49,208                    |
| <b>Modern Languages and Classics</b> |  |                              |                          |                     |                         |                             |
| Hoecherl-Alden, G.                   | Project Opportunity Yr 2   | US Dept of Education         | \$224,966                | \$14,108            | \$239,075               | \$11,998                    |
| <b>SUBTOTALS: NUMBER OF AWARDS:</b>  |  | 0.75                         | \$224,966                | \$14,108            | \$239,075               | \$11,998                    |
| <b>Physics and Astronomy</b>         |  |                              |                          |                     |                         |                             |
| Comins, N.                           | Black hole formation in supernovae   | Maine Space Grant Consortium | \$300                    | \$594               | \$894                   | \$0                         |
| Lad, R.                              | Accelerated Testing of Oxynitride Films for High Temperature Applications  | National Science Foundation  | \$150,000                | \$0                 | \$150,000               | \$47,024                    |
| Lad, R.                              | LGX High Temperature Acoustic Wave Sensors                                 | US Dept of Defense           | \$660,500                | \$40,510            | \$701,010               | \$182,520                   |

Awards Received for FY 2009

| <b>Name</b>                         | <b>Title</b>   | <b>Sponsor</b>                              | <b>Sponsor Total</b> | <b>UM Total</b>  | <b>Total Amount</b> | <b>Sponsor Indirect</b> |
|-------------------------------------|--|---|----------------------|------------------|---------------------|-------------------------|
| Lad, R.                             | Maine Nanofabrication R&D Infrastructure   | Maine Technology Institute                  | \$96,000             | \$56,575         | \$152,575           | \$0                     |
| Lad, R.                             | Surface Acoustic Wave Sensors for Turbine Engines Yr 2 I#1                       | US Dept of Defense                          | \$38,000             | \$0              | \$38,000            | \$12,130                |
| Lad, R.                             | Surface Acoustic Wave Sensors for Turbine Engines Yr 2 I#2                       | US Dept of Defense                          | \$10,136             | \$0              | \$10,136            | \$3,310                 |
| McKay, S.                           | Astrobiology Evaluation  | National Aeronautics & Space Administration | \$19,488             | \$10,748         | \$30,236            | \$2,303                 |
| McKay, S.                           | Impacts of Stemming the Gap Professional Development                             | Challenger Learning Center of Maine         | \$7,625              | \$774            | \$8,399             | \$0                     |
| Thompson, J.                        | Collaborative Research: Research and Curriculum Development in Thermal Physics   | National Science Foundation                 | \$337,214            | \$0              | \$337,214           | \$89,443                |
| Thompson, J.                        | Creation, Coordination, & Activation of Resources in Physics and Math Yr 3       | National Science Foundation                 | \$58,453             | \$0              | \$58,453            | \$18,625                |
| Thompson, J.                        | Paradigms in Physics: Creating and Testing Materials to Facilitate Dissemination | National Science Foundation                 | \$72,136             | \$0              | \$72,136            | \$22,412                |
| Wittmann, M.                        | Creation, Coordination, & Activation of Resources in Physics and Math Yr 3       | National Science Foundation                 | \$116,906            | \$0              | \$116,906           | \$37,249                |
| <b>SUBTOTALS: NUMBER OF AWARDS:</b> |  | 7.35  | <u>\$1,566,758</u>   | <u>\$109,201</u> | <u>\$1,675,959</u>  | <u>\$415,016</u>        |
| <b>Psychology</b>                   |  |   |                      |                  |                     |                         |
| Cobo-Lewis, A.                      | Childcare Research & Data Capacity Report 2007-2008                              | ME Dept of Health and Human Services        | \$42,687             | \$8,332          | \$51,019            | \$8,331                 |

Awards Received for FY 2009

| <b>Name</b>    | <b>Title</b>   | <b>Sponsor</b>                              | <b>Sponsor Total</b> | <b>UM Total</b> | <b>Total Amount</b> | <b>Sponsor Indirect</b> |
|----------------|--|---|----------------------|-----------------|---------------------|-------------------------|
| Cobo-Lewis, A. | Childcare Research and Data Capacity Report 2008-2009                          | US Dept of Health & Human Services          | \$147,483            | \$29,022        | \$176,506           | \$29,023                |
| Elias, M.      | Arterial Stiffness, Blood Pressure and Cognition Yr 4 +\$                      | US Dept of Health & Human Services          | \$28,304             | \$0             | \$28,304            | \$9,180                 |
| Elias, M.      | Arterial Stiffness, Blood Pressure and Cognition Yr4                           | US Dept of Health & Human Services          | \$254,734            | \$0             | \$254,734           | \$77,319                |
| Elias, P.      | Arterial Stiffness, Blood Pressure and Cognition Yr 4 +\$                      | US Dept of Health & Human Services          | \$21,228             | \$0             | \$21,228            | \$6,885                 |
| Elias, P.      | Arterial Stiffness, Blood Pressure and Cognition Yr4                           | US Dept of Health & Human Services          | \$191,051            | \$0             | \$191,051           | \$57,989                |
| Hayes, M.      | Research in Human Cancer for Improved Diagnosis, Prognosis and Innovation Yr 2 | US Dept of Defense                          | \$91,362             | \$0             | \$91,362            | \$27,421                |
| Hayes, M.      | Signal to Noise Ratio of Event-Related EEG Signals in High Risk Newborns       | National Aeronautics & Space Administration | \$2,500              | \$4,717         | \$7,217             | \$500                   |
| Hayes, M.      | Sleep, Arousal, and Spontaneous Movements in Opioid Exposed Infants            | US Dept of Health & Human Services          | \$184,210            | \$0             | \$184,210           | \$35,389                |
| Hecker, J.     | Enhancing Residential Sexual Behavior Treatment and Re-Entry Programming       | US Dept of Justice                          | \$341,576            | \$38,662        | \$380,238           | \$38,660                |
| Robbins, M.    | Arterial Stiffness, Blood Pressure and Cognition Yr 4 +\$                      | US Dept of Health & Human Services          | \$21,228             | \$0             | \$21,228            | \$6,885                 |
| Robbins, M.    | Arterial Stiffness, Blood Pressure and Cognition Yr4                           | US Dept of Health & Human Services          | \$191,051            | \$0             | \$191,051           | \$57,989                |
| Sigmon, S.     | Research in Human Cancer for Improved Diagnosis, Prognosis and Innovation Yr 2 | US Dept of Defense                          | \$91,362             | \$0             | \$91,362            | \$27,421                |

Awards Received for FY 2009

| Name  | Title  | Sponsor                            | Sponsor Total | UM Total | Total Amount | Sponsor Indirect |
|---|--|------------------------------------|---------------|----------|--------------|------------------|
| <b>SUBTOTALS: NUMBER OF AWARDS:</b>                           |  | 6.80                               | \$1,608,775   | \$80,732 | \$1,689,508  | \$382,991        |
| <b>Sociology</b>  |  |                                    |               |          |              |                  |
| Blackstone, A.  | Age, Power, and Workplace Harrassment                | National Science Foundation        | \$125,042     | \$0      | \$125,042    | \$35,655         |
| <b>SUBTOTALS: NUMBER OF AWARDS:</b>                           |  | 1.00                               | \$125,042     | \$0      | \$125,042    | \$35,655         |
| <b>COLLEGE OF NATURAL SCIENCES, FORESTRY, AND AGRICULTURE</b> |  |                                    |               |          |              |                  |
| Ashworth, E.  | National Coldwater Marine Acquaculture Center 2009   | US Dept of Agriculture             | \$9,900       | \$3,510  | \$13,410     | \$900            |
| Ashworth, E.  | New England Plant, Soil, & Water Lab 2008 + \$       | US Dept of Agriculture             | \$9,900       | \$3,465  | \$13,365     | \$900            |
| Ashworth, E.  | New England Plant, Soil, & Water Lab 2008 +\$        | US Dept of Agriculture             | \$36,630      | \$12,821 | \$49,451     | \$3,330          |
| Ashworth, E.  | New England Plant, Soil, & Water Lab 2009            | US Dept of Agriculture             | \$34,980      | \$12,402 | \$47,382     | \$3,180          |
| Ashworth, E.  | New England Plant, Soil, & Water Laboratory 2009     | US Dept of Agriculture             | \$16,500      | \$5,850  | \$22,350     | \$1,500          |
| Ashworth, E.  | Potato Breeding Laboratory 2009                      | US Dept of Agriculture             | \$4,000       | \$1,418  | \$5,418      | \$364            |
| <b>SUBTOTALS: NUMBER OF AWARDS:</b>                           |  | 6.00                               | \$111,910     | \$39,466 | \$151,376    | \$10,174         |
| <b>Animal and Veterinary Sciences</b>                         |  |                                    |               |          |              |                  |
| Bayer, R.   | Lobster Institute CORE Initiative                    | US Dept of Commerce                | \$133,816     | \$0      | \$133,816    | \$39,662         |
| <b>SUBTOTALS: NUMBER OF AWARDS:</b>                           |  | 0.75                               | \$133,816     | \$0      | \$133,816    | \$39,662         |
| <b>Biochemistry, Microbiology, &amp; Molecular Biology</b>    |  |                                    |               |          |              |                  |
| Devaud, L.  | Molecular Basis for Sex-Selective Effects of Ethanol | US Dept of Health & Human Services | \$273,947     | \$0      | \$273,947    | \$84,311         |

Awards Received for FY 2009

| <b>Name</b>                         | <b>Title</b>   | <b>Sponsor</b>                     | <b>Sponsor Total</b> | <b>UM Total</b> | <b>Total Amount</b> | <b>Sponsor Indirect</b> |
|-------------------------------------|--|------------------------------------|----------------------|-----------------|---------------------|-------------------------|
| Devaud, L.                          | Molecular Basis for Sex-Selective Effects of Ethanol +\$                       | US Dept of Health & Human Services | \$170,135            | \$0             | \$170,135           | \$55,951                |
| Gosse, J.                           | Arsenic Perturbation of Allergy/Asthma Signal Transduction                     | PhRMA Foundation                   | \$30,000             | \$14,700        | \$44,700            | \$0                     |
| Kim, C.                             | Functional Role of Zebrafish TLR Proteins                                      | US Dept of Health & Human Services | \$280,700            | \$0             | \$280,700           | \$87,467                |
| Mayer, G.                           | A Novel Role of Xenoestrogens in DNA Repair and Tumorigenesis +\$              | US Environmental Protection Agency | \$5,000              | \$0             | \$5,000             | \$0                     |
| Rumpho-Kennedy, M.                  | Generating a Draft Genome Sequence From Elysia Chlorotica +\$                  | National Science Foundation        | \$41,720             | \$20,443        | \$62,163            | \$13,720                |
| Rumpho-Kennedy, M.                  | NE Center for Invasive Plants, CT, VT, and ME                                  | US Dept of Agriculture             | \$34,950             | \$0             | \$34,950            | \$6,990                 |
| Wheeler, R.                         | Effect of Casofungin-mediated B-glucan Exposure on Fungal Clearance            | Merck and Company Inc              | \$47,214             | \$11,410        | \$58,624            | \$7,869                 |
| Wheeler, R.                         | Genomic Interrogation to Perturbation of Natural Fungal-host Cell Surfaces     | US Dept of Health & Human Services | \$131,160            | \$0             | \$131,160           | \$41,160                |
| <b>SUBTOTALS: NUMBER OF AWARDS:</b> |  | 8.34                               | \$1,014,826          | \$46,553        | \$1,061,379         | \$297,468               |
| <b>Earth Sciences</b>               |  |                                    |                      |                 |                     |                         |
| Belknap, D.                         | Eco-geomorphology of Maine Salt Pools Yr 2                                     | US Dept of Commerce                | \$10,000             | \$6,572         | \$16,572            | \$909                   |
| Belknap, D.                         | MRI: Acquisition of an SEM-EDS-EBSD-CL Microanalytical System                  | National Science Foundation        | \$22,879             | \$9,870         | \$32,749            | \$1,382                 |
| Denton, G.                          | A Southern Hemisphere Perspective on the Ice Ages from Torres del Paine, Chile | National Geographic Society        | \$11,000             | \$5,335         | \$16,335            | \$0                     |

Awards Received for FY 2009

| <b>Name</b> | <b>Title</b>   | <b>Sponsor</b>                           | <b>Sponsor Total</b> | <b>UM Total</b> | <b>Total Amount</b> | <b>Sponsor Indirect</b> |
|-------------|--|--|----------------------|-----------------|---------------------|-------------------------|
| Denton, G.  | Abrupt Climate Change in a Warming World: Lessons From Model Simulations       | US Dept of Commerce                      | \$73,333             | \$0             | \$73,333            | \$15,132                |
| Denton, G.  | The Last Termination from an Interhemispheric Perspective-2008 Earmarks        | US Dept of Commerce                      | \$173,913            | \$0             | \$173,913           | \$46,616                |
| Gerbi, C.   | MRI: Acquisition of an SEM-EDS-EBSD-CL Microanalytical System                  | National Science Foundation              | \$343,188            | \$148,043       | \$491,231           | \$20,732                |
| Grew, E.    | MRI: Acquisition of an SEM-EDS-EBSD-CL Microanalytical System                  | National Science Foundation              | \$22,879             | \$9,870         | \$32,749            | \$1,382                 |
| Hall, B.    | A Southern Hemisphere Perspective on the Ice Ages from Torres del Paine, Chile | National Geographic Society              | \$11,000             | \$5,335         | \$16,335            | \$0                     |
| Hall, B.    | Grounding-line retreat in the Southern Ross Sea-Constraints Scott Glacier Yr 3 | National Science Foundation              | \$57,396             | \$0             | \$57,396            | \$16,917                |
| Hall, B.    | Reconstructing Late Quaternary climate change in the tropics                   | Comer Science and Educational Foundation | \$15,000             | \$7,350         | \$22,350            | \$0                     |
| Hughes, T.  | Science and Technology Center: Ice Sheets and Sea Level Rise Yr 4              | National Science Foundation              | \$111,548            | \$33,883        | \$145,431           | \$34,730                |
| Johnson, S. | Dyamincs at the Base of a Pseudotachylyte-bearing Fault Yr 2                   | National Science Foundation              | \$54,799             | \$0             | \$54,799            | \$16,547                |
| Johnson, S. | MRI: Acquisition of an SEM-EDS-EBSD-CL Microanalytical System                  | National Science Foundation              | \$45,758             | \$19,739        | \$65,498            | \$2,764                 |
| Kelley, J.  | Eco-geomorphology of Maine Salt Pools Yr 2                                     | US Dept of Commerce                      | \$10,000             | \$6,572         | \$16,572            | \$909                   |

Awards Received for FY 2009

| <b>Name</b>  | <b>Title</b>   | <b>Sponsor</b>              | <b>Sponsor Total</b> | <b>UM Total</b> | <b>Total Amount</b> | <b>Sponsor Indirect</b> |
|--------------|--|-----------------------------|----------------------|-----------------|---------------------|-------------------------|
| Koons, P.    | Collaborative Research: St. Elias Erosion/Tectonics Project/(STEEP/) Yr 5    | National Science Foundation | \$27,763             | \$0             | \$27,763            | \$9,068                 |
| Koons, P.    | Dyamincs at the Base of a Pseudotachylyte-bearing Fault Yr 2                 | National Science Foundation | \$23,485             | \$0             | \$23,485            | \$7,091                 |
| Koons, P.    | MRI: Acquisition of an SEM-EDS-EBSD-CL Microanalytical System                | National Science Foundation | \$22,879             | \$9,870         | \$32,749            | \$1,382                 |
| Kreutz, K.   | Microparticle/tephra analysis of the WAIS Divide Ice Core Yr 3               | National Science Foundation | \$93,809             | \$0             | \$93,809            | \$29,582                |
| Kreutz, K.   | Reconstruction of Past Physical and Chemical Climate Over Asia               | National Science Foundation | \$124,601            | \$0             | \$124,601           | \$38,888                |
| Maasch, K.   | ARRA: Antarctic Climate Reconstruction Utilizing the US ITASE Ice Core Array | National Science Foundation | \$181,425            | \$0             | \$181,425           | \$58,036                |
| Maasch, K.   | US ITASE Glaciochemistry Phase 2: East Antarctica Yr 4                       | National Science Foundation | \$45,197             | \$0             | \$45,197            | \$14,274                |
| Mayewski, P. | ARRA: Antarctic Climate Reconstruction Utilizing the US ITASE Ice Core Array | National Science Foundation | \$362,850            | \$0             | \$362,850           | \$116,073               |
| Mayewski, P. | Exploring a 2 Million + Year Ice Climate Archive - Allan Hills Blue Ice Area | National Science Foundation | \$174,618            | \$0             | \$174,618           | \$52,368                |
| Mayewski, P. | ITASE Synthesis Workshop   | National Science Foundation | \$35,000             | \$0             | \$35,000            | \$0                     |
| Mayewski, P. | Major Advances in the Field of Climate Change Reconstruction Using Ice Cores | W.M. Keck Foundation        | \$1,600,000          | \$538,428       | \$2,138,428         | \$0                     |

Awards Received for FY 2009

| <b>Name</b>                             | <b>Title</b>  | <b>Sponsor</b>              | <b>Sponsor Total</b> | <b>UM Total</b>  | <b>Total Amount</b> | <b>Sponsor Indirect</b> |
|---|---|-----------------------------|----------------------|------------------|---------------------|-------------------------|
| Mayewski, P.                            | Microparticle/tephra analysis of the WAIS Divide Ice Core Yr 3            | National Science Foundation | \$25,584             | \$0              | \$25,584            | \$8,068                 |
| Mayewski, P.                            | Reconstruction of Past Physical and Chemical Climate Over Asia            | National Science Foundation | \$145,368            | \$0              | \$145,368           | \$45,369                |
| Mayewski, P.                            | The Last Termination from an Interhemispheric Perspective-2008 Earmarks   | US Dept of Commerce         | \$173,913            | \$0              | \$173,913           | \$46,616                |
| Mayewski, P.                            | US ITASE Glaciochemistry Phase 2: East Antarctica Yr 4                    | National Science Foundation | \$105,460            | \$0              | \$105,460           | \$33,305                |
| Norton, S.                              | COLLABORATIVE RESEARCH: Interactive Effects of Chronic N Deposition       | National Science Foundation | \$19,766             | \$0              | \$19,766            | \$5,923                 |
| Norton, S.                              | LTREB: Biogeochemical Mechanisms/Bear Brook Watershed Maine Yr 3          | National Science Foundation | \$26,425             | \$0              | \$26,425            | \$7,362                 |
| Olsen, A.                               | EarthKin, CEKA's Online Environmental Kinetics Database                   | National Science Foundation | \$30,847             | \$0              | \$30,847            | \$10,144                |
| Schauffler, M.                          | Collaborative Proposal: Connecting Climate to Curriculum                  | ME Dept of Education        | \$9,619              | \$2,302          | \$11,921            | \$970                   |
| Upton, P.                               | Collaborative Research: St. Elias Erosion/Tectonics Project/(STEEP/) Yr 5 | National Science Foundation | \$3,085              | \$0              | \$3,085             | \$1,008                 |
| <b>SUBTOTALS: NUMBER OF AWARDS:</b>     |   | 16.65                       | <u>\$4,194,388</u>   | <u>\$803,166</u> | <u>\$4,997,554</u>  | <u>\$643,544</u>        |
| <b>Food Science and Human Nutrition</b> |   |                             |                      |                  |                     |                         |
| Bushway, A.                             | Integrated Potato Breeding and Variety Development                        | US Dept of Agriculture      | \$16,000             | \$0              | \$16,000            | \$0                     |

Awards Received for FY 2009

| <b>Name</b>                         | <b>Title</b>   | <b>Sponsor</b>              | <b>Sponsor Total</b> | <b>UM Total</b> | <b>Total Amount</b> | <b>Sponsor Indirect</b> |
|-------------------------------------|--|-----------------------------|----------------------|-----------------|---------------------|-------------------------|
| Bushway, R.                         | Analytical Instrumentation for Pesticide Research                      | ME Dept of Agriculture      | \$20,475             | \$0             | \$20,475            | \$0                     |
| Cook, R.                            | Take Charge of Your Health 2007-2008                                   | US Dept of Agriculture      | \$31,020             | \$12,631        | \$43,651            | \$4,279                 |
| Klimis, D.                          | Maine Lowbush Blueberry sustainable Production and Processing Research | US Dept of Agriculture      | \$29,122             | \$13,696        | \$42,818            | \$0                     |
| Perkins, B.                         | Analysis of Carotenoids in Sea Urchins                                 | ME Dept of Marine Resources | \$5,000              | \$984           | \$5,984             | \$984                   |
| Perkins, B.                         | Analysis of Carotenoids in Sea Urchins +\$                             | ME Dept of Marine Resources | \$5,000              | \$984           | \$5,984             | \$984                   |
| Perkins, B.                         | Analytical Instrumentation for Pesticide Research                      | ME Dept of Agriculture      | \$20,475             | \$0             | \$20,475            | \$0                     |
| Skonberg, D.                        | Incorporating Smoke-Processed Salmon Oils into Value-Added Foods       | US Dept of Agriculture      | \$0                  | \$0             | \$0                 | \$0                     |
| Wu, V.                              | Development of Post-harvest Practical Methods to Reduce Contaminations | US Dept of Agriculture      | \$99,998             | \$0             | \$99,998            | \$20,000                |
| Wu, V.                              | Maine Lowbush Blueberry sustainable Production and Processing Research | US Dept of Agriculture      | \$27,409             | \$12,890        | \$40,299            | \$0                     |
| <b>SUBTOTALS: NUMBER OF AWARDS:</b> |  | 6.41                        | <u>\$254,500</u>     | <u>\$41,185</u> | <u>\$295,684</u>    | <u>\$26,247</u>         |
| <b>Forest Management</b>            |  |                             |                      |                 |                     |                         |
| Weiskittel, A.                      | Development of an Acadian Variant of FVS                               | US Dept of Agriculture      | \$27,311             | \$15,617        | \$42,928            | \$0                     |
| Weiskittel, A.                      | Development of an Acadian Variant of FVS Yr 2                          | US Dept of Agriculture      | \$27,311             | \$15,617        | \$42,928            | \$0                     |

Awards Received for FY 2009

| <b>Name</b>                                   | <b>Title</b>   | <b>Sponsor</b>              | <b>Sponsor Total</b> | <b>UM Total</b>  | <b>Total Amount</b> | <b>Sponsor Indirect</b> |
|---|--|-----------------------------|----------------------|------------------|---------------------|-------------------------|
| Weiskittel, A.                                | Estimating and mapping regional forest potential productivity                    | US Dept of Agriculture      | \$28,477             | \$7,119          | \$35,596            | \$0                     |
| Weiskittel, A.                                | Estimating and Mapping Regional Potential Productivity                           | US Dept of Agriculture      | \$80,084             | \$39,241         | \$119,325           | \$0                     |
| Weiskittel, A.                                | Influence of Partial Harvesting Intensity and Technology on Northern Forest Yr 2 | US Dept of Agriculture      | \$3,725              | \$2,143          | \$5,868             | \$0                     |
| Weiskittel, A.                                | Influence of Partial Harvesting Intensity and Technology on Northern Forests     | US Dept of Agriculture      | \$3,725              | \$2,143          | \$5,868             | \$0                     |
| Weiskittel, A.                                | Refinement of the FVS-NE Predictions of Individual Tree-growth Response          | US Dept of Agriculture      | \$28,000             | \$13,720         | \$41,720            | \$0                     |
| Weiskittel, A.                                | UMaine Proposal for Joining the NSF Center for Advanced Forestry Systems         | National Science Foundation | \$35,000             | \$46,845         | \$81,845            | \$2,564                 |
| <b>SUBTOTALS: NUMBER OF AWARDS:</b>           |  | 5.70                        | <u>\$233,633</u>     | <u>\$142,446</u> | <u>\$376,079</u>    | <u>\$2,564</u>          |
| <b>Plant, Soil and Environmental Sciences</b> |  |                             |                      |                  |                     |                         |
| Dail, B.                                      | Model Analyses & Surface-Atmosphere Exchange Measurements for C Cycling +\$      | US Dept of Agriculture      | \$14,000             | \$6,790          | \$20,790            | \$0                     |
| Dail, B.                                      | Model Analyses & Surface-Atmosphere Exchange Measurements for C Cycling Yr 2     | US Dept of Agriculture      | \$25,000             | \$12,125         | \$37,125            | \$0                     |
| Dail, B.                                      | Uncertainty About the Effects of Climatic Variation on Forest Ecosystems Yr 3    | US Dept of Energy           | \$21,099             | \$0              | \$21,099            | \$6,891                 |

Awards Received for FY 2009

| <b>Name</b>   | <b>Title</b>   | <b>Sponsor</b>                                | <b>Sponsor Total</b> | <b>UM Total</b> | <b>Total Amount</b> | <b>Sponsor Indirect</b> |
|---------------|--|---|----------------------|-----------------|---------------------|-------------------------|
| Dail, B.      | Using Model Analyses and Surface-Atmosphere Exchange Measurements +\$            | US Dept of Agriculture                        | \$30,000             | \$20,269        | \$50,269            | \$0                     |
| Dail, B.      | Viable Forest Harvesting Practices That Increase Carbon Sequestration Incr 2     | US Dept of Energy                             | \$136,073            | \$0             | \$136,073           | \$44,441                |
| Erich, M.     | Molecular Scale Study of Organic Matter and Phosphorus Interaction with Surfaces | US Dept of Agriculture                        | \$138,000            | \$0             | \$138,000           | \$27,600                |
| Fernandez, I. | COLLABORATIVE RESEARCH: Interactive Effects of Chronic N Deposition              | National Science Foundation                   | \$19,766             | \$0             | \$19,766            | \$5,923                 |
| Fernandez, I. | LTREB: Biogeochemical Mechanisms/Bear Brook Watershed Maine Yr 3                 | National Science Foundation                   | \$61,659             | \$0             | \$61,659            | \$17,178                |
| Gallandt, E.  | Evaluation of Scale-Appropriate Weed Control Tools for the Small Farm            | US Dept of Agriculture                        | \$9,236              | \$4,526         | \$13,762            | \$0                     |
| Lambert, D.   | Integrated Potato Breeding and Variety Development                               | US Dept of Agriculture                        | \$8,000              | \$0             | \$8,000             | \$0                     |
| Moran, R.     | Examining the Potential for Practical Chemical Control of Runner Growth          | North American Strawberry Growers Association | \$106                | \$28            | \$133               | \$0                     |
| Ohno, T.      | Molecular Scale Study of Organic Matter and Phosphorus Interaction with Surfaces | US Dept of Agriculture                        | \$207,000            | \$0             | \$207,000           | \$41,400                |
| Porter, G.    | Integrated Potato Breeding and Variety Development                               | US Dept of Agriculture                        | \$152,000            | \$0             | \$152,000           | \$0                     |

Awards Received for FY 2009

| <b>Name</b>   | <b>Title</b>   | <b>Sponsor</b>              | <b>Sponsor Total</b> | <b>UM Total</b> | <b>Total Amount</b> | <b>Sponsor Indirect</b> |
|---|--|-----------------------------|----------------------|-----------------|---------------------|-------------------------|
| Smagula, J.   | Maine Lowbush Blueberry sustainable Production and Processing Research | US Dept of Agriculture      | \$39,401             | \$18,529        | \$57,930            | \$0                     |
| Yarborough, D.  | IR-4 Minor Crop Pest Management 2008-2010                              | US Dept of Agriculture      | \$14,250             | \$6,983         | \$21,233            | \$0                     |
| Yarborough, D.  | Maine Lowbush Blueberry sustainable Production and Processing Research | US Dept of Agriculture      | \$6,852              | \$3,223         | \$10,075            | \$0                     |
| Zhang, D.   | NE Center for Invasive Plants, CT, VT, and ME                          | US Dept of Agriculture      | \$33,922             | \$0             | \$33,922            | \$6,784                 |
| <b>SUBTOTALS: NUMBER OF AWARDS:</b>                   |  | 10.30                       | <u>\$916,364</u>     | <u>\$72,473</u> | <u>\$988,836</u>    | <u>\$150,217</u>        |
| <b>School of Biological &amp; Ecological Sciences</b> |  |                             |                      |                 |                     |                         |
| Alyokhin, A.  | Integrated Potato Breeding and Variety Development                     | US Dept of Agriculture      | \$4,000              | \$0             | \$4,000             | \$0                     |
| Annis, S.   | Maine Lowbush Blueberry sustainable Production and Processing Research | US Dept of Agriculture      | \$39,401             | \$18,529        | \$57,930            | \$0                     |
| Campbell, C.  | Collaborative Research: Gymnosperms on the Tree of Life Yr 3           | National Science Foundation | \$57,903             | \$0             | \$57,903            | \$17,046                |
| Campbell, C.  | Collaborative Research: Gymnosperms on the Tree of Life Yr 4           | National Science Foundation | \$10,692             | \$0             | \$10,692            | \$3,492                 |
| De Los Reyes, B.                                      | Integrated Potato Breeding and Variety Development                     | US Dept of Agriculture      | \$16,000             | \$0             | \$16,000            | \$0                     |
| De Los Reyes, B.                                      | Pathway Engineering in Plants by Transcriptional Switches              | US Dept of Agriculture      | \$20,460             | \$7,254         | \$27,714            | \$1,860                 |
| De Los Reyes, B.                                      | Tetraploid Seedling Generation in Support of Varietal Development Yr 3 | US Dept of Agriculture      | \$35,000             | \$8,000         | \$43,000            | \$0                     |

Awards Received for FY 2009

| <b>Name</b>  | <b>Title</b>   | <b>Sponsor</b>              | <b>Sponsor Total</b> | <b>UM Total</b> | <b>Total Amount</b> | <b>Sponsor Indirect</b> |
|--------------|--|-----------------------------|----------------------|-----------------|---------------------|-------------------------|
| Drummond, F. | Development and Implementation of Diagnostic Tools to Access Bee Colony Health | US Dept of Agriculture      | \$20,000             | \$9,700         | \$29,700            | \$0                     |
| Drummond, F. | Enhancing Delivery and Effectiveness of Beauveria-based Bioinsecticide         | US Dept of Agriculture      | \$1,120              | \$0             | \$1,120             | \$0                     |
| Drummond, F. | Factors Responsible for Differences in Yield Among Lowbush Blueberry Clones    | US Dept of Agriculture      | \$58,120             | \$35,690        | \$93,810            | \$0                     |
| Drummond, F. | Genetic Diversity in Lowbush Blueberry, Vaccinium Angustifolium                | US Dept of Agriculture      | \$44,937             | \$36,919        | \$81,856            | \$0                     |
| Drummond, F. | Maine Lowbush Blueberry sustainable Production and Processing Research         | US Dept of Agriculture      | \$29,122             | \$13,696        | \$42,818            | \$0                     |
| Drummond, F. | Northeast Region Center for the IR-4 Minor Crop Pest Management Program        | US Dept of Agriculture      | \$4,750              | \$2,328         | \$7,078             | \$0                     |
| Drummond, F. | Northeast Region Center for the IR-4 Minor Crop Pest Management Program +\$    | US Dept of Agriculture      | \$2,000              | \$980           | \$2,980             | \$0                     |
| Drummond, F. | Sustainable Solutions to Problems Affecting Health of Managed Bees             | US Dept of Agriculture      | \$31,563             | \$0             | \$31,563            | \$6,313                 |
| Elskus, A.   | RCN: Diadromous Species Research Restoration Network (DSRRN) Yr 2              | National Science Foundation | \$7,548              | \$0             | \$7,548             | \$2,089                 |
| Groden, E.   | Enhancing Delivery and Effectiveness of Beauveria-based Bioinsecticide         | US Dept of Agriculture      | \$4,480              | \$0             | \$4,480             | \$0                     |

Awards Received for FY 2009

| <b>Name</b>   | <b>Title</b>   | <b>Sponsor</b>                     | <b>Sponsor Total</b> | <b>UM Total</b> | <b>Total Amount</b> | <b>Sponsor Indirect</b> |
|---------------|--|------------------------------------|----------------------|-----------------|---------------------|-------------------------|
| Hart, D.      | Mitchell Lecture on the Environment  | Maine Humanities Council           | \$198                | \$1,283         | \$1,481             | \$0                     |
| Hart, D.      | Penobscot Information Coordination   | US Dept of Commerce                | \$14,400             | \$0             | \$14,400            | \$3,044                 |
| Hart, D.      | RCN: Diadromous Species Research Restoration Network (DSRRN) Yr 2                | National Science Foundation        | \$60,384             | \$0             | \$60,384            | \$16,714                |
| Henry, C.     | Analysis of Myotome Boundary Morphogenesis during Zebrafish Development Yr 3     | US Dept of Health & Human Services | \$221,535            | \$0             | \$221,535           | \$60,922                |
| Holberton, R. | The Physiological Ecology of Seasonal Interactions Yr 3                          | National Science Foundation        | \$82,855             | \$0             | \$82,855            | \$23,067                |
| Jellison, J.  | Role of Fungi in Biotransformation of Wood and Base Cation Cycling in the Forest | US Dept of Agriculture             | \$5,500              | \$1,950         | \$7,450             | \$500                   |
| Jellison, J.  | Wood Utilization Research 2008   | US Dept of Agriculture             | \$68,440             | \$0             | \$68,440            | \$0                     |
| Kinnison, M.  | Linking Genes to Ecosystems Yr 3   | National Science Foundation        | \$77,067             | \$0             | \$77,067            | \$15,461                |
| Olsen, B.     | The Effect of Waterfowl Impoundments on Sora and Virginia Rail Populations       | US Dept of the Interior            | \$50,117             | \$42,878        | \$92,995            | \$8,561                 |
| Saros, J.     | Climate-Induced Shifts in Alpine Diatom Communities Yr 3                         | National Science Foundation        | \$57,619             | \$0             | \$57,619            | \$8,161                 |
| Saros, J.     | Climate-Induced Shifts in Alpine Diatom Communities Yr 3 +\$                     | National Science Foundation        | \$12,995             | \$0             | \$12,995            | \$0                     |

Awards Received for FY 2009

| <b>Name</b>                         | <b>Title</b>   | <b>Sponsor</b>                           | <b>Sponsor Total</b> | <b>UM Total</b>  | <b>Total Amount</b> | <b>Sponsor Indirect</b> |
|-------------------------------------|--|--|----------------------|------------------|---------------------|-------------------------|
| Saros, J.                           | Determine Critical Nitrogen Loads to Boreal Lake Ecosystems                    | US Dept of the Interior                  | \$47,349             | \$17,409         | \$64,758            | \$5,995                 |
| Saros, J.                           | Determining Critical Loads of Nitrogen and Sulfur in the Pacific Northwest +\$ | US Dept of Agriculture                   | \$6,000              | \$0              | \$6,000             | \$0                     |
| Saros, J.                           | Developing a Diatom Calibration Set for Rocky Mountain National Park- Year 2   | US Dept of the Interior                  | \$21,289             | \$3,850          | \$25,139            | \$2,173                 |
| Saros, J.                           | Effects of Alewives on Plankton in Maine's Lakes                               | ME Dept of Environmental Protection      | \$2,450              | \$482            | \$2,932             | \$482                   |
| Sewell, G.                          | Integrated Potato Breeding and Variety Development                             | US Dept of Agriculture                   | \$4,000              | \$0              | \$4,000             | \$0                     |
| Simon, K.                           | COLLABORATIVE RESEARCH: Interactive Effects of Chronic N Deposition            | National Science Foundation              | \$158,129            | \$0              | \$158,129           | \$47,386                |
| <b>SUBTOTALS: NUMBER OF AWARDS:</b> |  | 25.15                                    | <u>\$1,277,423</u>   | <u>\$200,948</u> | <u>\$1,478,371</u>  | <u>\$223,267</u>        |
| <b>School of Economics (NSFA)</b>   |  |  |                      |                  |                     |                         |
| Allen, T.                           | Stonington Fisheries Industry Economic Impact                                  | US Dept of Housing and Urban Development | \$1,349              | \$259            | \$1,608             | \$260                   |
| Anderson, M.                        | Recreation/Plum Creek Addendum   | ME Dept of Conservation                  | \$5,398              | \$1,053          | \$6,451             | \$1,054                 |
| Bell, K.                            | Improving Economic Analysis of Forest Change                                   | US Dept of Agriculture                   | \$24,996             | \$12,248         | \$37,244            | \$0                     |
| Bragg, L.                           | Proposal to Continue Enhancing Contribution to Maine's Tourism Industry        | ME Dept Economic & Community Development | \$100,000            | \$8,314          | \$108,314           | \$8,314                 |
| Criner, G.                          | Household Financial Education Initiative                                       | Maine Community Foundation               | \$5,000              | \$591            | \$5,591             | \$591                   |

Awards Received for FY 2009

| <b>Name</b>                         | <b>Title</b>   | <b>Sponsor</b>             | <b>Sponsor Total</b> | <b>UM Total</b> | <b>Total Amount</b> | <b>Sponsor Indirect</b> |
|-------------------------------------|--|----------------------------|----------------------|-----------------|---------------------|-------------------------|
| Criner, G.                          | Household Financial Education Travel                                     | Maine State Treasurer      | \$4,000              | \$473           | \$4,473             | \$472                   |
| Gabe, T.                            | Economic Impact of Cruise Ship Passengers in Portland, Maine             | City of Portland, Maine    | \$5,557              | \$657           | \$6,213             | \$657                   |
| Gabe, T.                            | Effects of Public Law 629 on Maine Beverage Taxes                        | Fed Up With Taxes          | \$21,699             | \$0             | \$21,699            | \$4,586                 |
| Rubin, J.                           | Marketing New England Biofuels To Ensure Energy Security                 | US Dept of Transportation  | \$24,987             | \$5,548         | \$30,535            | \$4,997                 |
| Rubin, J.                           | Road Salt Risk Assessment  | ME Dept of Transportation  | \$21,760             | \$4,055         | \$25,815            | \$4,055                 |
| Smith, S.                           | Increasing Prosperity for Small and Medium-Sized Farms/Ranches Yr 3      | US Dept of Agriculture     | \$26,979             | \$0             | \$26,979            | \$5,396                 |
| Teisl, M.                           | Marketing New England Biofuels To Ensure Energy Security                 | US Dept of Transportation  | \$34,981             | \$7,768         | \$42,749            | \$6,996                 |
| White, G.                           | Increasing Prosperity for Small and Medium-Sized Farms/Ranches Yr 3      | US Dept of Agriculture     | \$6,745              | \$0             | \$6,745             | \$1,349                 |
| <b>SUBTOTALS: NUMBER OF AWARDS:</b> |  | 8.15                       | <u>\$283,451</u>     | <u>\$40,965</u> | <u>\$324,416</u>    | <u>\$38,727</u>         |
| <b>School of Forest Resources</b>   |  |                            |                      |                 |                     |                         |
| Benjamin, J.                        | Growth, Lumber Yields, and Financial Maturity of Eastern White Pine Yr 2 | US Dept of Agriculture     | \$6,308              | \$3,091         | \$9,398             | \$0                     |
| Gardner, D.                         | Advanced Nanocomposites for the Renewable Energy Industry                | Maine Technology Institute | \$1,649,822          | \$800,164       | \$2,449,985         | \$0                     |

Awards Received for FY 2009

| <b>Name</b>   | <b>Title</b>   | <b>Sponsor</b>              | <b>Sponsor Total</b> | <b>UM Total</b> | <b>Total Amount</b> | <b>Sponsor Indirect</b> |
|---------------|--|-----------------------------|----------------------|-----------------|---------------------|-------------------------|
| Gardner, D.   | Explore It! Building the Next Generation of Sustainable Energy Researchers +\$   | National Science Foundation | \$6,000              | \$0             | \$6,000             | \$825                   |
| Gardner, D.   | Explore It! Building the Next Generation of Sustainable Energy Researchers Yr 3  | National Science Foundation | \$34,622             | \$0             | \$34,622            | \$4,961                 |
| Gardner, D.   | Wood Utilization Research 2008   | US Dept of Agriculture      | \$68,440             | \$0             | \$68,440            | \$0                     |
| Goodell, B.   | Wood Utilization Research 2008   | US Dept of Agriculture      | \$115,821            | \$0             | \$115,821           | \$0                     |
| Kenefic, L.   | Influence of Partial Harvesting Intensity and Technology on Northern Forest Yr 2 | US Dept of Agriculture      | \$3,725              | \$2,143         | \$5,868             | \$0                     |
| Kenefic, L.   | Influence of Partial Harvesting Intensity and Technology on Northern Forests     | US Dept of Agriculture      | \$3,725              | \$2,143         | \$5,868             | \$0                     |
| Kenefic, L.   | Rehabilitation of Cutover Mixed Wood Stands Yr 2                                 | US Dept of Agriculture      | \$9,994              | \$4,897         | \$14,891            | \$0                     |
| Kenefic, L.   | Support for Long-Term Research on the Penobscot Experimental Forest Yr 2         | US Dept of Agriculture      | \$2,303              | \$1,117         | \$3,420             | \$0                     |
| Leahy, J.     | Estimating Willingness to Accept Recreation Access Policies Incentives, & Comp.  | US Dept of Agriculture      | \$43,532             | \$20,841        | \$64,373            | \$0                     |
| Leahy, J.     | The Role of Social Capital, Trust and Learning in Solving Groundwater Quality    | US Dept of Agriculture      | \$111,000            | \$0             | \$111,000           | \$22,200                |
| Lilieholm, R. | Growth, Lumber Yields, and Financial Maturity of Eastern White Pine Yr 2         | US Dept of Agriculture      | \$6,308              | \$3,091         | \$9,398             | \$0                     |
| Lilieholm, R. | Rehabilitation of Cutover Mixed Wood Stands Yr 2                                 | US Dept of Agriculture      | \$4,997              | \$2,448         | \$7,445             | \$0                     |

Awards Received for FY 2009

| <b>Name</b>    | <b>Title</b>  | <b>Sponsor</b>                  | <b>Sponsor Total</b> | <b>UM Total</b> | <b>Total Amount</b> | <b>Sponsor Indirect</b> |
|----------------|---|---------------------------------|----------------------|-----------------|---------------------|-------------------------|
| Livingston, W. | Unifying Themes and Forests: Taking Advantage of Maine Resources                | US Dept of Education            | \$54,146             | \$902           | \$55,049            | \$2,654                 |
| Rice, R.       | Wood Utilization Research 2008  | US Dept of Agriculture          | \$68,440             | \$0             | \$68,440            | \$0                     |
| Sader, S.      | Monitoring Maine State Held Conservation Easements                              | Maine Outdoor Heritage Fund     | \$49,000             | \$4,990         | \$53,990            | \$4,991                 |
| Sader, S.      | Quantifying Partial Harvest Rates, Intensity, & Residual Stand Composition Yr 2 | US Dept of Agriculture          | \$25,230             | \$12,363        | \$37,593            | \$0                     |
| Sader, S.      | The Pingree and Downeast (Sunrise) Forest Conservation Easements                | New England Forestry Foundation | \$52,943             | \$11,084        | \$64,027            | \$4,963                 |
| Seymour, R.    | Growth, Lumber Yields, and Financial Maturity of Eastern White Pine Yr 2        | US Dept of Agriculture          | \$12,615             | \$6,182         | \$18,797            | \$0                     |
| Seymour, R.    | Influence of Neighborhood Structure on Growth and Advance Regeneration Yr 2     | US Dept of Agriculture          | \$20,000             | \$9,800         | \$29,800            | \$0                     |
| Shaler, S.     | Forest and Ag Bioproducts Research, Development and Commercialization Facility  | Maine Technology Institute      | \$1,200,000          | \$393,505       | \$1,593,505         | \$0                     |
| Shaler, S.     | Wood Utilization Research 2008  | US Dept of Agriculture          | \$68,440             | \$0             | \$68,440            | \$0                     |
| Wagner, R.     | Predicting the Effects of Traditional and Emerging Forestry Practices           | US Dept of Agriculture          | \$63,536             | \$31,133        | \$94,669            | \$0                     |
| Wagner, R.     | UMaine Proposal for Joining the NSF Center for Advanced Forestry Systems        | National Science Foundation     | \$35,000             | \$46,845        | \$81,845            | \$2,564                 |

Awards Received for FY 2009

| <b>Name</b>                         | <b>Title</b>   | <b>Sponsor</b>                           | <b>Sponsor Total</b> | <b>UM Total</b>    | <b>Total Amount</b> | <b>Sponsor Indirect</b> |
|-------------------------------------|--|--|----------------------|--------------------|---------------------|-------------------------|
| Wiersma, B.                         | A Decision-Support System for Forest Management Subcontract/Yanai Yr 2           | US Dept of Agriculture                   | \$26,912             | \$0                | \$26,912            | \$0                     |
| Wiersma, B.                         | CESU UMAINE Keeping Maine's Forests Project                                      | Northeastern States Research Cooperative | \$61,825             | \$3,125            | \$64,950            | \$4,165                 |
| Wiersma, B.                         | Monitoring Physiological Responses of Forest Trees Yr 2                          | US Dept of Agriculture                   | \$25,348             | \$0                | \$25,348            | \$0                     |
| Wiersma, B.                         | Northeastern States Research Cooperative at UM - Year 3                          | US Dept of Agriculture                   | \$129,221            | \$63,318           | \$192,539           | \$0                     |
| Wiersma, B.                         | Northeastern States Research Cooperative at UM - Year 4                          | US Dept of Agriculture                   | \$281,366            | \$44,725           | \$326,091           | \$0                     |
| Wiersma, B.                         | Restoring American Chestnut and Associated Products to the Northern Forest       | US Dept of Agriculture                   | \$24,000             | \$11,760           | \$35,760            | \$0                     |
| Wilson, J.                          | Influence of Partial Harvesting Intensity and Technology on Northern Forest Yr 2 | US Dept of Agriculture                   | \$29,800             | \$17,147           | \$46,947            | \$0                     |
| Wilson, J.                          | Influence of Partial Harvesting Intensity and Technology on Northern Forests     | US Dept of Agriculture                   | \$29,800             | \$17,147           | \$46,947            | \$0                     |
| Wilson, J.                          | Rehabilitation of Cutover Mixed Wood Stands Yr 2                                 | US Dept of Agriculture                   | \$9,994              | \$4,897            | \$14,891            | \$0                     |
| Wilson, J.                          | Support for Long-Term Research on the Penobscot Experimental Forest Yr 2         | US Dept of Agriculture                   | \$20,727             | \$10,053           | \$30,780            | \$0                     |
| <b>SUBTOTALS: NUMBER OF AWARDS:</b> |  | 19.99                                    | <u>\$4,354,939</u>   | <u>\$1,528,911</u> | <u>\$5,883,850</u>  | <u>\$47,323</u>         |
| <b>School of Marine Sciences</b>    |  |  |                      |                    |                     |                         |
| Barber, B.                          | Oyster Industry Cooperative Broodstock Improvement +\$                           | Maine Aquaculture Innovation Center      | \$456                | \$214              | \$670               | \$0                     |

Awards Received for FY 2009

| <b>Name</b>   | <b>Title</b>  | <b>Sponsor</b>                              | <b>Sponsor Total</b> | <b>UM Total</b> | <b>Total Amount</b> | <b>Sponsor Indirect</b> |
|---------------|---|---|----------------------|-----------------|---------------------|-------------------------|
| Boss, E.      | Assessing Impacts on Carbon Transport From Land to Ocean                        | National Aeronautics & Space Administration | \$30,000             | \$14,031        | \$44,031            | \$0                     |
| Boss, E.      | Centers for Ocean Science Education - Ocean in the Earth-Sun System Yr 4        | National Science Foundation                 | \$43,519             | \$11,886        | \$55,406            | \$10,550                |
| Boss, E.      | Optics, Acoustics, and Stress in a Nearshore Bottom Nepheloid Layer I#10        | US Dept of Defense                          | \$98,000             | \$0             | \$98,000            | \$29,839                |
| Boss, E.      | Relating the Optical and Acoustical Properties of Oceanic Particles             | US Dept of Defense                          | \$35,939             | \$0             | \$35,939            | \$9,700                 |
| Brawley, S.   | Building Capacity & Excellence in Maine's Marine Aquaculture R&D Infrastructure | Maine Technology Institute                  | \$261,981            | \$263,813       | \$525,794           | \$0                     |
| Brawley, S.   | The Porphyra Genome Yr 2  | National Science Foundation                 | \$100,000            | \$0             | \$100,000           | \$9,725                 |
| Bricknell, I. | Determining the Health Risks of Lobster Bait to Marine Animals                  | ME Dept of Marine Resources                 | \$42,181             | \$8,202         | \$50,383            | \$8,233                 |
| Bricknell, I. | Potential Health & Economic Benefits of Bivalve/fin-fish Co-culture             | US Dept of Agriculture                      | \$150,000            | \$14,795        | \$164,795           | \$0                     |
| Byrne, D.     | Collaborative Proposal: Connecting Climate to Curriculum                        | ME Dept of Education                        | \$11,543             | \$2,762         | \$14,305            | \$1,164                 |
| Chai, F.      | Climate Change and its Impact on the Ecosystem of the Arabian Sea Yr 2 I#3      | National Aeronautics & Space Administration | \$53,333             | \$0             | \$53,333            | \$17,658                |
| Chai, F.      | Climate Change and its Impact on the Ecosystem of the Arabian Sea Yr 2 I#4      | National Aeronautics & Space Administration | \$26,667             | \$0             | \$26,667            | \$8,710                 |

Awards Received for FY 2009

| <b>Name</b> | <b>Title</b>   | <b>Sponsor</b>                              | <b>Sponsor Total</b> | <b>UM Total</b> | <b>Total Amount</b> | <b>Sponsor Indirect</b> |
|-------------|--|---|----------------------|-----------------|---------------------|-------------------------|
| Chai, F.    | Collaborative Proposal: Connecting Climate to Curriculum                       | ME Dept of Education                        | \$9,619              | \$2,302         | \$11,921            | \$970                   |
| Chai, F.    | Effect of Varying Freshwater Inputs on Regional Ecosystems in the No. Atlantic | National Science Foundation                 | \$156,640            | \$0             | \$156,640           | \$51,158                |
| Chai, F.    | Physical-Biological-Optics Model Development and Simulation Yr 2               | US Dept of Defense                          | \$116,096            | \$0             | \$116,096           | \$37,917                |
| Chai, F.    | Remote Sensing, Modeling & Data Assimilation to Sustain Fisheries I#5          | National Aeronautics & Space Administration | \$85,500             | \$0             | \$85,500            | \$27,745                |
| Chen, Y.    | Assessment of Sea Scallop Distribution and Abundance in Federal Waters         | ME Dept of Marine Resources                 | \$27,002             | \$4,049         | \$31,051            | \$4,049                 |
| Chen, Y.    | Cooperative Marine Fisheries Research  | ME Dept of Marine Resources                 | \$14,222             | \$2,798         | \$17,020            | \$2,799                 |
| Chen, Y.    | Lobster Settlement Forecasting in the Gulf of Maine                            | National Aeronautics & Space Administration | \$43,182             | \$0             | \$43,182            | \$13,633                |
| Chen, Y.    | Study Northern Shrimp ( <i>Pandalus borealis</i> ) Trap By-Catch               | ME Dept of Marine Resources                 | \$7,892              | \$1,553         | \$9,445             | \$1,553                 |
| Connell, L. | Collaborative Research: Microbially Mediated Alteration of Volcanic Glass      | National Science Foundation                 | \$17,208             | \$0             | \$17,208            | \$3,551                 |
| Connell, L. | MERHAB 2005: Rapid HAB Detection Instrument Development and Deployment Yr 4    | US Dept of Commerce                         | \$19,787             | \$0             | \$19,787            | \$6,462                 |

Awards Received for FY 2009

| <b>Name</b>   | <b>Title</b>  | <b>Sponsor</b>                              | <b>Sponsor Total</b> | <b>UM Total</b> | <b>Total Amount</b> | <b>Sponsor Indirect</b> |
|---------------|---|---|----------------------|-----------------|---------------------|-------------------------|
| Connell, L.   | Spread of a Sodium Channel Mutation in Softshell Clam, Mya arenaria, Yr 3     | US Dept of Commerce                         | \$291,221            | \$0             | \$291,221           | \$48,865                |
| Connell, L.   | US-Ireland Partnership Program: Biosafety for EnvironmentALCOntaminants       | National Science Foundation                 | \$333,441            | \$0             | \$333,441           | \$106,653               |
| de Charon, A. | Centers for Ocean Sciences Education Excellence                               | National Science Foundation                 | \$76,180             | \$0             | \$76,180            | \$16,101                |
| de Charon, A. | Education and Outreach for the NASA Aquarius Satellite Mission I#4            | National Aeronautics & Space Administration | \$108,700            | \$0             | \$108,700           | \$23,079                |
| de Charon, A. | Education and Outreach for the NASA Aquarius Satellite Mission I#4            | National Aeronautics & Space Administration | \$82,966             | \$0             | \$82,966            | \$16,712                |
| de Charon, A. | Engaging Diverse Student Perspectives in the Development of Case Studies Yr 2 | National Aeronautics & Space Administration | \$59,985             | \$33,832        | \$93,817            | \$13,360                |
| de Charon, A. | NSF Centers for Ocean Sciences Education Excellence Yr 3                      | National Science Foundation                 | \$315,662            | \$0             | \$315,662           | \$48,399                |
| de Charon, A. | Space Grant Year 18 Fellowship at the University of Maine                     | National Aeronautics & Space Administration | \$20,000             | \$21,720        | \$41,720            | \$0                     |
| de Charon, A. | Supplement to COSEE-Ocean Systems   | National Science Foundation                 | \$65,587             | \$0             | \$65,587            | \$14,338                |
| de Charon, A. | The National Coordinating Office - COSEE                                      | National Science Foundation                 | \$53,100             | \$0             | \$53,100            | \$0                     |
| Jumars, P.    | ARRA: Functional Diversity of Subsurface Deposit Feeders                      | National Science Foundation                 | \$349,439            | \$0             | \$349,439           | \$102,388               |

Awards Received for FY 2009

| <b>Name</b>   | <b>Title</b>   | <b>Sponsor</b>                              | <b>Sponsor Total</b> | <b>UM Total</b> | <b>Total Amount</b> | <b>Sponsor Indirect</b> |
|---------------|--|---|----------------------|-----------------|---------------------|-------------------------|
| Karp-Boss, L. | Centers for Ocean Science Education - Ocean in the Earth-Sun System Yr 4               | National Science Foundation                 | \$65,279             | \$17,830        | \$83,108            | \$15,825                |
| Karp-Boss, L. | Collaborative Proposal: Connecting Climate to Curriculum                               | ME Dept of Education                        | \$7,695              | \$1,841         | \$9,537             | \$776                   |
| Kornfield, I. | Genetic Differentiation of <i>Odocoileus</i> Species II                                | Boone and Crockett Club                     | \$25,000             | \$12,250        | \$37,250            | \$0                     |
| Lindsay, S.   | ARRA: Functional Diversity of Subsurface Deposit Feeders                               | National Science Foundation                 | \$149,759            | \$0             | \$149,759           | \$43,881                |
| Lindsay, S.   | Ecology of Injury in Marine Sedimentary Habitats: Effects of Repeated Injury           | National Science Foundation                 | \$381,823            | \$0             | \$381,823           | \$113,512               |
| Mayer, L.     | Photodissolution of Soil Organic Matter  | US Dept of Agriculture                      | \$100,000            | \$0             | \$100,000           | \$20,000                |
| Perry, M.     | Autonomous Measurements of Carbon Fluxes in the North Atlantic Bloom +\$               | National Science Foundation                 | \$65,000             | \$0             | \$65,000            | \$0                     |
| Perry, M.     | Reducing Uncertainty in the Marine Carbon Cycle  | National Aeronautics & Space Administration | \$108,975            | \$0             | \$108,975           | \$15,520                |
| Perry, M.     | Regional Surveys of Physical and Biophysical Variability in the Philippines I#3        | US Dept of Defense                          | \$48,155             | \$0             | \$48,155            | \$15,727                |
| Pershing, A.  | CR:Life Histories of Species in the Genus <i>Calanus</i> in the N.Atlantic & N.Pacific | National Science Foundation                 | \$55,634             | \$0             | \$55,634            | \$17,036                |
| Pershing, A.  | Lobster Settlement Forecasting in the Gulf of Maine                                    | National Aeronautics & Space Administration | \$43,182             | \$0             | \$43,182            | \$13,633                |
| Pershing, A.  | Shore-based Photogrammetry of Surface Oceanography for Oil Spill Mitigation Yr 2       | ME Dept of Environmental Protection         | \$25,154             | \$27,743        | \$52,897            | \$2,285                 |

Awards Received for FY 2009

| <b>Name</b>   | <b>Title</b>   | <b>Sponsor</b>                              | <b>Sponsor Total</b> | <b>UM Total</b> | <b>Total Amount</b> | <b>Sponsor Indirect</b> |
|---------------|--|---|----------------------|-----------------|---------------------|-------------------------|
| Pershing, A.  | Times Series Monitoring and Modeling of Abundance of Calnus finmarchicus       | ME Dept of Marine Resources                 | \$53,197             | \$0             | \$53,197            | \$10,469                |
| Pettigrew, N. | CARICOOS Buoy Program  | US Dept of Commerce                         | \$140,105            | \$0             | \$140,105           | \$24,267                |
| Pettigrew, N. | Dynamics of Alexandrium fundyense Blooms in the Gulf of Maine Yr 3 I#1         | US Dept of Commerce                         | \$24,445             | \$0             | \$24,445            | \$7,984                 |
| Pettigrew, N. | Remote Assessment of algal Functional Groups in the Absence of Extreme Blooms: | National Aeronautics & Space Administration | \$20,314             | \$0             | \$20,314            | \$6,262                 |
| Rawson, P.    | Identification of Biomarkers for Disease Detection in Eastern Oysters          | US Dept of Commerce                         | \$7,425              | \$0             | \$7,425             | \$2,425                 |
| Rawson, P.    | Oyster Industry Cooperative Broodstock Improvement +\$                         | Maine Aquaculture Innovation Center         | \$4,103              | \$1,929         | \$6,032             | \$0                     |
| Roesler, C.   | Cape Ann Buoy Optics (GoMOOS Buoy A) FY 2009                                   | Massachusetts Water Resource Authority      | \$28,930             | \$0             | \$28,930            | \$9,514                 |
| Roesler, C.   | How Green is the Gulf of Maine   | National Aeronautics & Space Administration | \$30,000             | \$0             | \$30,000            | \$0                     |
| Roesler, C.   | Particulate and Dissolved Materials in the Penobscot River System Inc#3        | US Dept of Defense                          | \$35,000             | \$0             | \$35,000            | \$11,431                |
| Roesler, C.   | Particulate and Dissolved Materials in the Penobscot River System Inc#4        | US Dept of Defense                          | \$107,970            | \$0             | \$107,970           | \$35,263                |
| Roesler, C.   | Remote Assessment of algal Functional Groups in the Absence of Extreme Blooms: | National Aeronautics & Space Administration | \$182,823            | \$0             | \$182,823           | \$56,357                |
| Roesler, C.   | Using Remote Sensing to Understand Carbon Flow and its Transformations Yr 2    | National Aeronautics & Space Administration | \$107,078            | \$0             | \$107,078           | \$34,972                |

Awards Received for FY 2009

| <b>Name</b> | <b>Title</b>  | <b>Sponsor</b>                | <b>Sponsor Total</b> | <b>UM Total</b> | <b>Total Amount</b> | <b>Sponsor Indirect</b> |
|-------------|---|-------------------------------|----------------------|-----------------|---------------------|-------------------------|
| Runge, J.   | Analysis of Herring Diet in Coastal Waters of the Gulf of Maine                 | University of New Hampshire   | \$24,998             | \$0             | \$24,998            | \$8,164                 |
| Runge, J.   | Can Bottom-up Effects Influence Energetic Condition of Atlantic Herring         | US Dept of Commerce           | \$40,026             | \$7,845         | \$47,871            | \$13,163                |
| Runge, J.   | CR:Life Histories of Species in the Genus Calanus in the N.Atlantic & N.Pacific | National Science Foundation   | \$222,534            | \$0             | \$222,534           | \$68,145                |
| Runge, J.   | Predictors for Larval Transport and Recruitment for Cod in the Gulf of Maine    | US Dept of Commerce           | \$23,411             | \$0             | \$23,411            | \$7,699                 |
| Runge, J.   | Times Series Monitoring and Modeling of Abundance of Calanus finmarchicus       | ME Dept of Marine Resources   | \$53,197             | \$0             | \$53,197            | \$10,469                |
| Sidell, B.  | Linkages Among Mitochondrial Form, Function and Thermal Tolerance in Fishes     | National Science Foundation   | \$203,218            | \$0             | \$203,218           | \$59,977                |
| Sidell, B.  | Linkages Among Mitochondrial Form, Function and Thermal Tolerance in Fishes +\$ | National Science Foundation   | \$40,599             | \$5,606         | \$46,205            | \$8,962                 |
| Steneck, R. | Rodolfo Chang +\$\$   | Wildlife Conservation Society | \$21,308             | \$0             | \$21,308            | \$0                     |
| Thomas, A.  | Collaborative Research: GLOBEC Pan-regional Synthesis: Pacific Ocean Boundary   | National Science Foundation   | \$325,579            | \$0             | \$325,579           | \$100,529               |
| Thomas, A.  | Dynamics of Alexandrium fundyense Blooms in the Gulf of Maine Yr 3 I#1          | US Dept of Commerce           | \$10,371             | \$0             | \$10,371            | \$3,387                 |

Awards Received for FY 2009

| <b>Name</b>                         | <b>Title</b>   | <b>Sponsor</b>                              | <b>Sponsor Total</b> | <b>UM Total</b>  | <b>Total Amount</b> | <b>Sponsor Indirect</b> |
|-------------------------------------|--|---|----------------------|------------------|---------------------|-------------------------|
| Thomas, A.                          | GLOBEC Pan-regional Synthesis: End-to-end Energy Budget in US-GLOBEC Regions | National Science Foundation                 | \$154,294            | \$0              | \$154,294           | \$50,392                |
| Thomas, A.                          | Lobster Settlement Forecasting in the Gulf of Maine                          | National Aeronautics & Space Administration | \$86,364             | \$0              | \$86,364            | \$27,265                |
| Townsend, D.                        | Dynamics of Alexandrium fundyense Blooms in the Gulf of Maine Yr 3 I#1       | US Dept of Commerce                         | \$39,260             | \$0              | \$39,260            | \$12,822                |
| Van Beneden, R.                     | Mechanism of arsenic inhibition of DNA repair in human lung cells            | American Lung Association of Maine          | \$3,000              | \$1,470          | \$4,470             | \$0                     |
| Wells, M.                           | Collaborative Researcy: A Nanostructure Sensor for Determining Iron          | National Science Foundation                 | \$581,828            | \$0              | \$581,828           | \$165,569               |
| Wells, M.                           | Microparticle/tephra analysis of the WAIS Divide Ice Core Yr 3               | National Science Foundation                 | \$25,584             | \$0              | \$25,584            | \$8,068                 |
| Wilson, J.                          | Stonington Fisheries Industry Economic Impact                                | US Dept of Housing and Urban Development    | \$5,398              | \$1,035          | \$6,433             | \$1,040                 |
| Xue, H.                             | Lobster Settlement Forecasting in the Gulf of Maine                          | National Aeronautics & Space Administration | \$43,182             | \$0              | \$43,182            | \$13,633                |
| Xue, H.                             | Using Remote Sensing to Understand Carbon Flow and its Transformations Yr 2  | National Aeronautics & Space Administration | \$35,693             | \$0              | \$35,693            | \$11,657                |
| Zydlowski, G.                       | Research on Habitat Connectivity for Diadromous Fish in the Penobscot Basin  | Nature Conservancy                          | \$21,839             | \$5,278          | \$27,117            | \$3,640                 |
| <b>SUBTOTALS: NUMBER OF AWARDS:</b> |  | 58.90                                       | <u>\$6,885,776</u>   | <u>\$464,784</u> | <u>\$7,350,560</u>  | <u>\$1,667,029</u>      |

Awards Received for FY 2009

| <b>Name</b>             | <b>Title</b>   | <b>Sponsor</b>                      | <b>Sponsor Total</b> | <b>UM Total</b> | <b>Total Amount</b> | <b>Sponsor Indirect</b> |
|-------------------------|--|-------------------------------------|----------------------|-----------------|---------------------|-------------------------|
| <b>Wildlife Ecology</b> |  |                                     |                      |                 |                     |                         |
| Burns, C.               | Protecting Biodiversity in an Increasing Urban World Yr 2                      | Earthwatch Institute                | \$40,625             | \$8,407         | \$49,032            | \$0                     |
| Coghlan, S.             | Brook Trout Conservation in Headwaters Streams                                 | National Fish & Wildlife Foundation | \$100,000            | \$170,535       | \$270,535           | \$0                     |
| Coghlan, S.             | Interactive Ecology of Atlantic Salmon and Exotic Smallmouth Bass in ME Rivers | Maine Outdoor Heritage Fund         | \$4,000              | \$32,203        | \$36,203            | \$522                   |
| Coghlan, S.             | RWO54: Changes in Fish Community Structure & Function after Dam Removal +\$    | US Dept of the Interior             | \$7,050              | \$704           | \$7,754             | \$920                   |
| Harrison, D.            | Effectiveness of Zoning to Protect Deer Wintering Areas                        | US Dept of Agriculture              | \$8,700              | \$4,263         | \$12,963            | \$0                     |
| Harrison, D.            | Relationships Between Snowshoe Hare Densities and Forest Management +\$        | US Dept of the Interior             | \$11,200             | \$3,263         | \$14,463            | \$1,462                 |
| Hunter, M.              | Holt Woodlands 2009 (Part 1)   | Holt Foundation                     | \$38,849             | \$19,036        | \$57,885            | \$0                     |
| Hunter, M.              | Holt Woodlands 2009 (Part 2)   | Holt Foundation                     | \$0                  | \$0             | \$0                 | \$0                     |
| Krohn, W.               | Relationships Between Snowshoe Hare Densities and Forest Management +\$        | US Dept of the Interior             | \$4,800              | \$1,398         | \$6,198             | \$626                   |
| Loftin, C.              | RWO53: The Role of Marine Derived Nutrients Delivered by Anadromous Fish +\$   | US Dept of the Interior             | \$7,050              | \$0             | \$7,050             | \$920                   |
| Witham, J.              | Holt Woodlands 2009 (Part 2)   | Holt Foundation                     | \$52,058             | \$25,508        | \$77,566            | \$0                     |
| Zydlowski, J.           | Interactive Ecology of Atlantic Salmon and Exotic Smallmouth Bass in ME Rivers | Maine Outdoor Heritage Fund         | \$4,000              | \$32,203        | \$36,203            | \$522                   |

Awards Received for FY 2009

| <b>Name</b>                         | <b>Title</b>   | <b>Sponsor</b>                         | <b>Sponsor Total</b> | <b>UM Total</b> | <b>Total Amount</b> | <b>Sponsor Indirect</b> |
|-------------------------------------|--|--|----------------------|-----------------|---------------------|-------------------------|
| Zydlowski, J.                       | Investigations on Declining Populations of Whitefish in Maine Yr. 4          | US Dept of the Interior                | \$40,000             | \$11,826        | \$51,826            | \$5,217                 |
| Zydlowski, J.                       | Passage of Anadromous Fish at Main-stem Dams on the Penobscot River          | US Dept of Commerce                    | \$75,472             | \$43,174        | \$118,646           | \$9,844                 |
| Zydlowski, J.                       | RWO53: The Role of Marine Derived Nutrients Delivered by Anadromous Fish +\$ | US Dept of the Interior                | \$7,050              | \$0             | \$7,050             | \$920                   |
| Zydlowski, J.                       | RWO54: Changes in Fish Community Structure & Function after Dam Removal +\$  | US Dept of the Interior                | \$7,050              | \$704           | \$7,754             | \$920                   |
| Zydlowski, J.                       | Studies of Sea Run Brook Trout in two Maine Streams Yr. 2                    | ME Dept of Inland Fisheries & Wildlife | \$25,000             | \$6,209         | \$31,209            | \$2,739                 |
| Zydlowski, J.                       | Support for Purchase of a DIDSON Unit  | Nature Conservancy                     | \$20,000             | \$48,900        | \$68,900            | \$0                     |
| <b>SUBTOTALS: NUMBER OF AWARDS:</b> |  | 13.00                                  | \$452,904            | \$408,331       | \$861,235           | \$24,610                |

**COOPERATIVE EXTENSION**

|              |  |                                 |          |         |          |       |
|--------------|--|---------------------------------|----------|---------|----------|-------|
| Anderson, G. | Improving Milk Quality on Maine Dairy Farms: Monitoring On Farm Raw Milk Quality | George Walker Foundation        | \$17,700 | \$8,673 | \$26,373 | \$0   |
| Babkirk, D.  | Maine Youth Camping Project 08-09  | Maine Youth Camping Association | \$12,016 | \$926   | \$12,942 | \$926 |
| Bassano, L.  | Down East Micro Enterprise Network: Lesson Challenges and Opportunities          | Maine Community Foundation      | \$3,790  | \$1,655 | \$5,446  | \$239 |

Awards Received for FY 2009

| <b>Name</b>    | <b>Title</b>  | <b>Sponsor</b>                       | <b>Sponsor Total</b> | <b>UM Total</b> | <b>Total Amount</b> | <b>Sponsor Indirect</b> |
|----------------|---|--------------------------------------|----------------------|-----------------|---------------------|-------------------------|
| Beard, R.      | Support to Downeast Public Health Coordinating Committee                        | ME Dept of Health and Human Services | \$6,250              | \$478           | \$6,728             | \$485                   |
| Bouchard, D.   | Characterize Fish Health of Rainbow Smelt and Atlantic Sturgeon                 | ME Dept of Marine Resources          | \$49,967             | \$9,833         | \$59,800            | \$9,833                 |
| Bouchard, D.   | Lobster Institute CORE Initiative   | US Dept of Commerce                  | \$44,605             | \$0             | \$44,605            | \$13,221                |
| Bouchard, D.   | Tools and Techniques to Recognize Lobster Stressors throughout the Supply Chain | ME Dept of Marine Resources          | \$45,609             | \$8,901         | \$54,510            | \$8,902                 |
| Brzozowski, R. | Assessing Pasture Grasses, Legumes and Pastures Blends                          | US Dept of Agriculture               | \$10,000             | \$1,326         | \$11,326            | \$0                     |
| Brzozowski, R. | Baldwin Community Development Project   | Maine Community Foundation           | \$9,790              | \$754           | \$10,544            | \$755                   |
| Dill, J.       | 2008 PRONew England Pest Management Network                                     | US Dept of Agriculture               | \$38,763             | \$0             | \$38,763            | \$5,141                 |
| Dill, J.       | Potato Integrated Pest Management, Late Blight, ME                              | US Dept of Agriculture               | \$57,197             | \$0             | \$57,197            | \$11,802                |
| Dwyer, J.      | Agricultural Integration Conference: Aroostook County                           | Maine Potato Board                   | \$225                | \$0             | \$225               | \$0                     |
| Dwyer, J.      | Hairy Nightshade - A Potato Factsheet   | Maine Potato Board                   | \$375                | \$98            | \$473               | \$0                     |
| Dwyer, J.      | Potato Integrated Pest Management, Late Blight, ME                              | US Dept of Agriculture               | \$228,787            | \$0             | \$228,787           | \$47,210                |
| Eckart, D.     | Prenatal Education Project MCF2008  | Maine Community Foundation           | \$750                | \$57            | \$807               | \$57                    |
| Forstadt, L.   | Prenatal Education Project MCF2008  | Maine Community Foundation           | \$6,750              | \$509           | \$7,259             | \$509                   |
| Gagne, K.      | Operation Military Kids   | US Dept of Agriculture               | \$100,000            | \$14,279        | \$114,279           | \$0                     |

Awards Received for FY 2009

| <b>Name</b>    | <b>Title</b>   | <b>Sponsor</b>                                | <b>Sponsor Total</b> | <b>UM Total</b> | <b>Total Amount</b> | <b>Sponsor Indirect</b> |
|----------------|--|---|----------------------|-----------------|---------------------|-------------------------|
| Gagne, K.      | Operation Military Kids Camp Initiative 2009                                     | US Dept of Agriculture                        | \$50,000             | \$908           | \$50,908            | \$0                     |
| Handley, D.    | Examining the Potential for Practical Chemical Control of Runner Growth          | North American Strawberry Growers Association | \$953                | \$248           | \$1,201             | \$0                     |
| Handley, D.    | Grafting Tomatoes for Improved Yield in Hoophouses                               | US Dept of Agriculture                        | \$2,381              | \$619           | \$3,001             | \$0                     |
| Hutchinson, M. | 3rd International Symposium  | US Dept of Agriculture                        | \$25,000             | \$0             | \$25,000            | \$251                   |
| Hutchinson, M. | Farms For Future 2009  | ME Dept of Agriculture                        | \$33,300             | \$2,567         | \$35,867            | \$2,565                 |
| Hutchinson, M. | Sustainable livestock Mortality management                                       | US Dept of Agriculture                        | \$169,425            | \$34,562        | \$203,987           | \$0                     |
| Hutton, M.     | Grafting Tomatoes for Improved Yield in Hoophouses                               | US Dept of Agriculture                        | \$7,144              | \$1,858         | \$9,002             | \$0                     |
| Jemison, J.    | New England Regional Water Quality Project                                       | US Dept of Agriculture                        | \$73,464             | \$0             | \$73,464            | \$14,694                |
| Jemison, J.    | The Role of Social Capital, Trust and Learning in Solving Groundwater Quality    | US Dept of Agriculture                        | \$111,000            | \$0             | \$111,000           | \$22,200                |
| Jemison, J.    | Utilization and Cropping Effects of Alternative Energy Grass Crops in Maine      | Maine Potato Board                            | \$8,328              | \$14,652        | \$22,980            | \$1,719                 |
| Jemison, J.    | Winter Grain and Short-season Corn Double Crop Forage Systems: Weed Mgmt.        | US Dept of Agriculture                        | \$53,459             | \$0             | \$53,459            | \$0                     |
| Jemison, J.    | Winter Grain and Short-season Corn Double Crop Forage systems: for Organic Dairy | US Dept of Agriculture                        | \$15,000             | \$0             | \$15,000            | \$0                     |
| Johnson, S.    | Managing Risk with GAP (Good Agriculture Practices)                              | US Dept of Agriculture                        | \$7,400              | \$0             | \$7,400             | \$1,465                 |

Awards Received for FY 2009

| <b>Name</b>       | <b>Title</b>  | <b>Sponsor</b>                       | <b>Sponsor Total</b> | <b>UM Total</b> | <b>Total Amount</b> | <b>Sponsor Indirect</b> |
|-------------------|---|--------------------------------------|----------------------|-----------------|---------------------|-------------------------|
| Koehler, G.       | 2008 PRONew England Pest Management Network                                     | US Dept of Agriculture               | \$155,054            | \$0             | \$155,054           | \$20,564                |
| Koehler, G.       | Light Brown Apple Moth Detection Survey in Maine Apple Orchards                 | US Dept of Agriculture               | \$5,224              | \$617           | \$5,841             | \$617                   |
| Koehler, G.       | Light Brown Apple Moth Survey 2009  | US Dept of Agriculture               | \$6,214              | \$734           | \$6,948             | \$734                   |
| LaHaye, P.        | Maine Home Visiting Program Consultation FY 09                                  | ME Dept of Health and Human Services | \$94,000             | \$7,244         | \$101,244           | \$7,244                 |
| LaHaye, P.        | Parents Are Teachers Too -- Waldo County 2008                                   | US Dept of Agriculture               | \$80,533             | \$15,901        | \$96,434            | \$11,108                |
| Lichtenwalner, A. | Characterize Fish Health of Rainbow Smelt and Atlantic Sturgeon                 | ME Dept of Marine Resources          | \$2,630              | \$518           | \$3,147             | \$518                   |
| Lincoln, W.       | Maine Family Nutrition Program 2008-2009  | ME Dept of Health and Human Services | \$1,301,088          | \$0             | \$1,301,088         | \$118,281               |
| Lindberg, K.      | Maine Healthy Beaches 2009  | US Environmental Protection Agency   | \$169,403            | \$13,055        | \$182,458           | \$13,055                |
| Lindberg, K.      | Maine Healthy Beaches 2009 +\$  | US Environmental Protection Agency   | \$7,000              | \$540           | \$7,540             | \$540                   |
| Lobley, J.        | National 4-H Volunteer Strategy   | US Dept of Agriculture               | \$3,000              | \$0             | \$3,000             | \$429                   |
| Majka, A.         | Passamaquoddy Indian Township Nutrition Services                                | US Dept of Health & Human Services   | \$58,212             | \$0             | \$58,212            | \$8,330                 |
| Mallory, E.       | Building SARE Outreach Capacity in Maine and Developing Regional Expertise      | US Dept of Agriculture               | \$24,854             | \$10,100        | \$34,954            | \$0                     |
| Mallory, E.       | Implementing Maine's 2008-2010 Sustainable Agriculture Professional Development | US Dept of Agriculture               | \$15,000             | \$6,548         | \$21,548            | \$0                     |

Awards Received for FY 2009

| <b>Name</b>  | <b>Title</b>   | <b>Sponsor</b>                       | <b>Sponsor Total</b> | <b>UM Total</b> | <b>Total Amount</b> | <b>Sponsor Indirect</b> |
|--------------|--|--------------------------------------|----------------------|-----------------|---------------------|-------------------------|
| McConnon, J. | Down East Micro Enterprise Network: Lesson Challenges and Opportunities          | Maine Community Foundation           | \$2,527              | \$1,104         | \$3,630             | \$159                   |
| McConnon, J. | Economic Impact of Cruise Ship Passengers in Portland, Maine                     | City of Portland, Maine              | \$2,381              | \$281           | \$2,663             | \$281                   |
| Plant, A.    | Agricultural Integration Conference: Aroostook County                            | Maine Potato Board                   | \$675                | \$0             | \$675               | \$0                     |
| Plant, A.    | Hairy Nightshade - A Potato Factsheet  | Maine Potato Board                   | \$1,125              | \$293           | \$1,418             | \$0                     |
| Plant, A.    | Utilization and Cropping Effects of Alternative Energy Grass Crops in Maine      | Maine Potato Board                   | \$8,328              | \$14,652        | \$22,980            | \$1,719                 |
| Plant, A.    | Weed Control of Hairy Nightshade and Triazine-Resistant Lambsquarter in Potatoes | Maine Potato Board                   | \$1,930              | \$502           | \$2,432             | \$0                     |
| Rebar, J.    | Crop Insurance and Risk Management Education for Maine                           | US Dept of Agriculture               | \$225,000            | \$34,364        | \$259,364           | \$20,453                |
| Rebar, J.    | Farms For Future 2009  | ME Dept of Agriculture               | \$3,700              | \$285           | \$3,985             | \$285                   |
| Reimer, N.   | DHHS/Waldo PATT FY 09  | ME Dept of Health and Human Services | \$159,536            | \$43,939        | \$203,475           | \$12,294                |
| Stack, L.    | NE Center for Invasive Plants, CT, VT, and ME                                    | US Dept of Agriculture               | \$33,922             | \$0             | \$33,922            | \$6,784                 |
| Swain, A.    | OES Support to the Senior Companion Program 2008-2009                            | ME Dept of Health and Human Services | \$14,340             | \$0             | \$14,340            | \$0                     |
| Swain, A.    | Senior Companion Program 07-11   | United Way of Eastern Maine          | \$14,938             | \$1,247         | \$16,185            | \$0                     |

Awards Received for FY 2009

| Name                                | Title   | Sponsor                                      | Sponsor Total      | UM Total         | Total Amount       | Sponsor Indirect |
|-------------------------------------|---|--|--------------------|------------------|--------------------|------------------|
| Swain, A.                           | University of Maine Cooperative Extension Senior Companion Program 2008-2009  | Corporation for National & Community Service | \$366,022          | \$116,544        | \$482,566          | \$15,361         |
| Watt, B.                            | Plant Disease Diagnostic Lab 2008-2009  | US Dept of Agriculture                       | \$30,000           | \$8,404          | \$38,404           | \$0              |
| Wertheim, F.                        | On Farm Colonization of Tomatoes by AM Fungi                                  | US Dept of Agriculture                       | \$4,055            | \$1,967          | \$6,022            | \$0              |
| Wertheim, F.                        | On-farm Colonization of Tomatoes by Mycorrhizal Fungi                         | US Dept of Agriculture                       | \$8,307            | \$1,737          | \$10,044           | \$0              |
| Wilson, L.                          | The Role of Social Capital, Trust and Learning in Solving Groundwater Quality | US Dept of Agriculture                       | \$111,000          | \$0              | \$111,000          | \$22,200         |
| Yerxa, K.                           | Making Your Own Baby Food Classes   | City of Bangor, Maine                        | \$3,141            | \$371            | \$3,512            | \$371            |
| <b>SUBTOTALS: NUMBER OF AWARDS:</b> |   | 47.18  | <u>\$4,102,567</u> | <u>\$383,848</u> | <u>\$4,486,415</u> | <u>\$403,300</u> |

**DIVISION OF LIFELONG LEARNING**

**Peace Studies**

|                                     |  |                                      |                 |                |                 |                |
|-------------------------------------|--|--------------------------------------|-----------------|----------------|-----------------|----------------|
| Blazej, B.                          | Youth Violence and Suicide Prevention K-12 Schools (2008-2009) | ME Dept of Health and Human Services | \$64,744        | \$4,990        | \$69,734        | \$4,989        |
| <b>SUBTOTALS: NUMBER OF AWARDS:</b> |  | 1.00                                 | <u>\$64,744</u> | <u>\$4,990</u> | <u>\$69,734</u> | <u>\$4,989</u> |

**Wabanaki Center**

|                                     |                                      |                            |                |              |                |              |
|-------------------------------------|--------------------------------------|----------------------------|----------------|--------------|----------------|--------------|
| Dana-Sacco, G.                      | Native Alumni Connections Initiative | Maine Community Foundation | \$4,000        | \$474        | \$4,474        | \$472        |
| <b>SUBTOTALS: NUMBER OF AWARDS:</b> |                                      | 1.00                       | <u>\$4,000</u> | <u>\$474</u> | <u>\$4,474</u> | <u>\$472</u> |

Awards Received for FY 2009

| <b>Name</b>                          | <b>Title</b>  | <b>Sponsor</b>                     | <b>Sponsor<br/>Total</b> | <b>UM<br/>Total</b> | <b>Total<br/>Amount</b> | <b>Sponsor<br/>Indirect</b> |
|--------------------------------------|---|------------------------------------|--------------------------|---------------------|-------------------------|-----------------------------|
| <b>Women's Resource Center</b>       |   |                                    |                          |                     |                         |                             |
| Barker, S.                           | National Girls Collaborative Project  | National Science Foundation        | \$28,445                 | \$10,295            | \$38,740                | \$0                         |
| <b>SUBTOTALS: NUMBER OF AWARDS:</b>  |   | 1.00                               | \$28,445                 | \$10,295            | \$38,740                | \$0                         |
| <b>HONORS COLLEGE</b>                |   |                                    |                          |                     |                         |                             |
| Slavin, C.                           | Comparative Functional Genomics INBRE in Maine (Honors College)             | US Dept of Health & Human Services | \$128,293                | \$0                 | \$128,293               | \$29,743                    |
| <b>SUBTOTALS: NUMBER OF AWARDS:</b>  |   | 1.00                               | \$128,293                | \$0                 | \$128,293               | \$29,743                    |
| <b>LIBRARIES</b>                     |   |                                    |                          |                     |                         |                             |
| <b>Fogler Library</b>                |   |                                    |                          |                     |                         |                             |
| Rumery, J.                           | Circulation of School Health Audio-Visual and Print Resources 2008          | ME Dept of Education               | \$8,100                  | \$1,117             | \$9,217                 | \$1,117                     |
| Rumery, J.                           | Maine Nutrition Network/Folger Library Health Education Resource Collection | US Dept of Agriculture             | \$16,298                 | \$98                | \$16,396                | \$2,248                     |
| <b>SUBTOTALS: NUMBER OF AWARDS:</b>  |   | 2.00                               | \$24,398                 | \$1,215             | \$25,613                | \$3,365                     |
| <b>UNKNOWN ORGANIZATIONAL ENTITY</b> |   |                                    |                          |                     |                         |                             |
| <b>ADMINISTRATION AND FINANCE</b>    |   |                                    |                          |                     |                         |                             |
| Waldron, J.                          | ME DHHS Child Care Agreement 2009   | US Dept of Health & Human Services | \$994                    | \$266               | \$1,260                 | \$0                         |
| <b>SUBTOTALS: NUMBER OF AWARDS:</b>  |   | 0.01                               | \$994                    | \$266               | \$1,260                 | \$0                         |

Awards Received for FY 2009

| <b>Name</b>                                       | <b>Title</b>   | <b>Sponsor</b>                     | <b>Sponsor<br/>Total</b> | <b>UM<br/>Total</b> | <b>Total<br/>Amount</b> | <b>Sponsor<br/>Indirect</b> |
|---|--|------------------------------------|--------------------------|---------------------|-------------------------|-----------------------------|
| <b>Facilities Management</b>                      |  |                                    |                          |                     |                         |                             |
| Wilkerson, S.                                     | Regional Pilot to Reduce Stormwater Polluting Behaviors Through Social Marketing | US Dept of the Interior            | \$13,483                 | \$11,889            | \$25,372                | \$0                         |
| <b>SUBTOTALS: NUMBER OF AWARDS:</b>               |  | 1.00                               | \$13,483                 | \$11,889            | \$25,372                | \$0                         |
| <b>CHIEF FINANCIAL OFFICER</b>                    |  |                                    |                          |                     |                         |                             |
| <b>HUMAN RESOURCES</b>                            |  |                                    |                          |                     |                         |                             |
| <b>Children's Center</b>                          |  |                                    |                          |                     |                         |                             |
| Quimby, G.  | ME DHHS Child Care Agreement 2009  | US Dept of Health & Human Services | \$98,374                 | \$26,365            | \$124,739               | \$0                         |
| <b>SUBTOTALS: NUMBER OF AWARDS:</b>               |  | 0.99                               | \$98,374                 | \$26,365            | \$124,739               | \$0                         |
| <b>VICE PRESIDENT FOR RESEARCH</b>                |  |                                    |                          |                     |                         |                             |
| <b>RESEARCH</b>                                   |  |                                    |                          |                     |                         |                             |
| <b>Advanced Engineered Wood Composites Center</b> |  |                                    |                          |                     |                         |                             |
| Goslin, K.  | Concrete Filled Tubular FRP Arch Bridges   | ME Dept of Transportation          | \$75,975                 | \$14,955            | \$90,930                | \$14,955                    |
| Lindyberg, R.                                     | Advanced Nanocomposites for the Renewable Energy Industry                        | Maine Technology Institute         | \$1,699,816              | \$824,411           | \$2,524,227             | \$0                         |
| Lindyberg, R.                                     | Composite Invert Lining for Culvert Repair                                       | Kenway Corporation                 | \$2,743                  | \$540               | \$3,283                 | \$540                       |
| Lindyberg, R.                                     | Development and Production of Composite Anti-tamper Containers (CATMs)           | US Dept of Homeland Security       | \$466,322                | \$0                 | \$466,322               | \$144,467                   |
| Marquis, J.                                       | Composite Invert Lining for Culvert Repair                                       | Kenway Corporation                 | \$24,687                 | \$4,858             | \$29,545                | \$4,858                     |

Awards Received for FY 2009

| <b>Name</b>  | <b>Title</b>   | <b>Sponsor</b>                                    | <b>Sponsor Total</b> | <b>UM Total</b>  | <b>Total Amount</b> | <b>Sponsor Indirect</b> |
|--|--|---|----------------------|------------------|---------------------|-------------------------|
| Melrose, P.  | Ballistic Panels for the Containerized Kitchen (CK) and the Mobile Kitchen Trail | US Dept of Defense                                | \$34,610             | \$0              | \$34,610            | \$11,382                |
| Nagy, E.   | Concrete Filled Tubular FRP Arch Bridges   | ME Dept of Transportation                         | \$75,975             | \$14,955         | \$90,930            | \$14,955                |
| Parent, L.   | Ballistic Panels for the Containerized Kitchen (CK) and the Mobile Kitchen Trail | US Dept of Defense                                | \$42,301             | \$0              | \$42,301            | \$13,911                |
| Parent, L.   | Concrete Filled Tubular FRP Arch Bridges   | ME Dept of Transportation                         | \$25,325             | \$4,985          | \$30,310            | \$4,985                 |
| <b>SUBTOTALS: NUMBER OF AWARDS:</b>                            |  | 4.04  | <u>\$2,447,754</u>   | <u>\$864,703</u> | <u>\$3,312,458</u>  | <u>\$210,052</u>        |
| <b>Canadian American Center</b>                                |  |   |                      |                  |                     |                         |
| Hornsby, S.  | Foreign Language and Area Studies Fellowships 2009-2010                          | US Dept of Education                              | \$134,000            | \$0              | \$134,000           | \$0                     |
| Hornsby, S.  | Northeast Resource Center on Canada 2008 - 2009                                  | US Dept of Education                              | \$227,807            | \$0              | \$227,807           | \$9,698                 |
| <b>SUBTOTALS: NUMBER OF AWARDS:</b>                            |  | 2.00  | <u>\$361,807</u>     | <u>\$0</u>       | <u>\$361,807</u>    | <u>\$9,698</u>          |
| <b>Center for Community Inclusion &amp; Disability Studies</b> |  |   |                      |                  |                     |                         |
| May, J.  | Project Ready to Serve Maine   | Association of University Centers on Disabilities | \$25,000             | \$3,818          | \$28,818            | \$2,273                 |
| <b>SUBTOTALS: NUMBER OF AWARDS:</b>                            |  | 1.00  | <u>\$25,000</u>      | <u>\$3,818</u>   | <u>\$28,818</u>     | <u>\$2,273</u>          |
| <b>Center on Aging</b>   |  |   |                      |                  |                     |                         |
| Burnett, P.  | Born to Read Hancock County Expansion  | Maine Community Foundation                        | \$6,471              | \$472            | \$6,943             | \$471                   |
| Burnett, P.  | RSVP Bone Builders   | United Way of Eastern Maine                       | \$14,060             | \$1,346          | \$15,406            | \$0                     |

Awards Received for FY 2009

| <b>Name</b>                         | <b>Title</b>   | <b>Sponsor</b>                               | <b>Sponsor Total</b> | <b>UM Total</b> | <b>Total Amount</b> | <b>Sponsor Indirect</b> |
|-------------------------------------|--|--|----------------------|-----------------|---------------------|-------------------------|
| Burnett, P.                         | RSVP Grant Renewal Application to CNCS   | Corporation for National & Community Service | \$111,289            | \$48,540        | \$159,829           | \$0                     |
| Burnett, P.                         | State of Maine DHHS/OES Renewal for RSVP                                       | ME Dept of Health and Human Services         | \$14,340             | \$3,843         | \$18,183            | \$0                     |
| Burnett, P.                         | The Plum Creek Foundation Foundation Grant Application-RSVP                    | Plum Creek Foundation                        | \$2,500              | \$536           | \$3,036             | \$0                     |
| Burnett, P.                         | UMaine Center on Aging RSVP Support 09-11                                      | United Way of Eastern Maine                  | \$29,700             | \$0             | \$29,700            | \$0                     |
| Charland, J.                        | 2008 International Symposium on Pharmaceuticals in the Home                    | Purdue Pharma                                | \$2,500              | \$0             | \$2,500             | \$516                   |
| Charland, J.                        | 2008 International Symposium on Pharmaceuticals in the Home and Environment    | Maine Health Access Foundation               | \$2,000              | \$536           | \$2,536             | \$0                     |
| Charland, J.                        | The Bingham Program Conference Support   | Bingham Program                              | \$1,000              | \$167           | \$1,167             | \$0                     |
| Janicki, M.                         | Supports for Carers Caring for Adults with Intellectual Disabilities 2007-2008 | US Dept of Education                         | \$30,000             | \$0             | \$30,000            | \$3,143                 |
| <b>SUBTOTALS: NUMBER OF AWARDS:</b> |  | 10.00  | \$213,860            | \$55,440        | \$269,300           | \$4,130                 |
| <b>Climate Change Institute</b>     |  |  |                      |                 |                     |                         |
| Hamilton, G.                        | CR: Norwegan-United States IPY Scientific Traverse: Climate Variability Yr 3   | National Science Foundation                  | \$77,608             | \$0             | \$77,608            | \$24,416                |
| Hamilton, G.                        | Ice Dynamics & Surface Glaciology Along US ITASE Traverse Routes Yr 4          | National Science Foundation                  | \$74,633             | \$0             | \$74,633            | \$23,091                |
| Hamilton, G.                        | Ice Dynamics & Surface Glaciology Along US ITASE Traverse Routes Yr 4 +\$      | National Science Foundation                  | \$19,935             | \$0             | \$19,935            | \$6,556                 |

Awards Received for FY 2009

| <b>Name</b>                                 | <b>Title</b>  | <b>Sponsor</b>              | <b>Sponsor Total</b> | <b>UM Total</b> | <b>Total Amount</b> | <b>Sponsor Indirect</b> |
|---|---|-----------------------------|----------------------|-----------------|---------------------|-------------------------|
| Kurbatov, A.                                | ARRA: Antarctic Climate Reconstruction Utilizing the US ITASE Ice Core Array    | National Science Foundation | \$181,425            | \$0             | \$181,425           | \$58,036                |
| Kurbatov, A.                                | Exploring a 2 Million + Year Ice Climate Archive - Allan Hills Blue Ice Area    | National Science Foundation | \$261,928            | \$0             | \$261,928           | \$78,552                |
| Kurbatov, A.                                | Microparticle/tephra analysis of the WAIS Divide Ice Core Yr 3                  | National Science Foundation | \$25,584             | \$0             | \$25,584            | \$8,068                 |
| Kurbatov, A.                                | Reconstruction of Past Physical and Chemical Climate Over Asia                  | National Science Foundation | \$145,368            | \$0             | \$145,368           | \$45,369                |
| <b>SUBTOTALS: NUMBER OF AWARDS:</b>         |   | 4.35                        | \$786,480            | \$0             | \$786,480           | \$244,088               |
| <b>Department of Industrial Cooperation</b> |   |                             |                      |                 |                     |                         |
| Brown, N.                                   | A Demonstation of Sustainable Commercial Cod Culture                            | US Dept of Commerce         | \$17,181             | \$0             | \$17,181            | \$5,611                 |
| Brown, N.                                   | Building Capacity & Excellence in Maine's Marine Aquaculture R&D Infrastructure | Maine Technology Institute  | \$1,964,856          | \$1,978,598     | \$3,943,454         | \$0                     |
| Ward, J.                                    | Building Capacity & Excellence in Maine's Marine Aquaculture R&D Infrastructure | Maine Technology Institute  | \$392,971            | \$395,720       | \$788,691           | \$0                     |
| <b>SUBTOTALS: NUMBER OF AWARDS:</b>         |   | 1.90                        | \$2,375,008          | \$2,374,318     | \$4,749,326         | \$5,611                 |
| <b>Margaret Chase Smith Center</b>          |   |                             |                      |                 |                     |                         |
| Acheson, A.                                 | Evolution of Norms and Conservation Rules in Two Fisheries                      | National Science Foundation | \$45,838             | \$0             | \$45,838            | \$14,970                |

Awards Received for FY 2009

| <b>Name</b>                         | <b>Title</b>  | <b>Sponsor</b>                       | <b>Sponsor Total</b> | <b>UM Total</b> | <b>Total Amount</b> | <b>Sponsor Indirect</b> |
|-------------------------------------|---|--------------------------------------|----------------------|-----------------|---------------------|-------------------------|
| Acheson, A.                         | Poverty Newsletter 2009 +\$   | Maine Community Action Association   | \$11,306             | \$1,336         | \$12,642            | \$1,336                 |
| Morris, C.                          | Evaluation of Prescription Monitoring Program Participation                     | US Dept of Justice                   | \$0                  | \$0             | \$0                 | \$0                     |
| Morris, C.                          | Road Salt Risk Assessment   | ME Dept of Transportation            | \$21,760             | \$4,055         | \$25,815            | \$4,055                 |
| Sorg, M.                            | Data Collection on Toxicology Findings in Motor Vehicle Fatalities and Suicides | ME Dept of Health and Human Services | \$5,000              | \$0             | \$5,000             | \$1,057                 |
| Sorg, M.                            | Developing and Validating Regional Taphonomic Standards                         | US Dept of Justice                   | \$278,978            | \$0             | \$278,978           | \$91,744                |
| Sorg, M.                            | Drug-Related Overdose, Death and Poisoning 2002-2008                            | US Dept of Justice                   | \$39,887             | \$0             | \$39,887            | \$13,117                |
| Sorg, M.                            | Evaluation of Prescription Monitoring Program Participation                     | US Dept of Justice                   | \$67,174             | \$0             | \$67,174            | \$22,091                |
| <b>SUBTOTALS: NUMBER OF AWARDS:</b> |   | 5.65                                 | <u>\$469,942</u>     | <u>\$5,391</u>  | <u>\$475,333</u>    | <u>\$148,370</u>        |
| <b>Sea Grant Program</b>            |   |                                      |                      |                 |                     |                         |
| Anderson, P.                        | Dean John A. Knauss Marine Policy Fellowship - McMahon                          | US Dept of Commerce                  | \$43,500             | \$21,098        | \$64,598            | \$0                     |
| Anderson, P.                        | Enhancing the Involvement of Fishermen in Marine Protected Area Activity Yr 5   | US Dept of Commerce                  | \$37,642             | \$0             | \$37,642            | \$12,379                |
| Anderson, P.                        | Maine Sea Grant Program Management 2008-2010 Yr 2                               | US Dept of Commerce                  | \$245,806            | \$344,769       | \$590,575           | \$80,280                |

Awards Received for FY 2009

| <b>Name</b>                              | <b>Title</b>   | <b>Sponsor</b>                         | <b>Sponsor Total</b> | <b>UM Total</b> | <b>Total Amount</b> | <b>Sponsor Indirect</b> |
|--|--|--|----------------------|-----------------|---------------------|-------------------------|
| Anderson, P.                             | Maine Sea Grant Program<br>Marine Extension 2008-2010<br>Yr 2                          | US Dept of Commerce                    | \$244,880            | \$2,470         | \$247,350           | \$58,575                |
| Anderson, P.                             | MOSAC 2008 Research<br>Competition and<br>Administration + \$                          | ME Dept of Environmental<br>Protection | \$9,500              | \$4,608         | \$14,108            | \$0                     |
| Anderson, P.                             | UM Sea Grant Program -<br>Program Development (UMM)                                    | US Dept of Commerce                    | \$0                  | \$0             | \$0                 | \$0                     |
| Bartlett, C.                             | Monitoring Smelt Populations<br>in Washington County                                   | ME Dept of Marine Resources            | \$7,801              | \$898           | \$8,699             | \$897                   |
| Hoyt, S.                                 | Enhancing the involvement of<br>Fishermen and Other<br>Stakeholders in MPAs            | US Dept of Commerce                    | \$35,290             | \$0             | \$35,290            | \$5,050                 |
| Hoyt, S.                                 | Local Marketing and Capacity<br>Building Support for the<br>Midcoast Fishermen's Assoc | Up East Foundation                     | \$5,000              | \$835           | \$5,835             | \$0                     |
| Springuel, N.                            | Legal & Policy Tools for<br>Protection of Coastal Access<br>in Maine & the Nation +\$  | US Dept of Commerce                    | \$3,017              | \$1,509         | \$4,526             | \$623                   |
| White, S.                                | Maine Sea Grant<br>Communications 2008-2010<br>Yr 2                                    | US Dept of Commerce                    | \$164,633            | \$59,905        | \$224,538           | \$53,769                |
| Whiting-Grant, K.                        | Legal & Policy Tools for<br>Protection of Coastal Access<br>in Maine & the Nation +\$  | US Dept of Commerce                    | \$3,017              | \$1,509         | \$4,526             | \$623                   |
| <b>SUBTOTALS: NUMBER OF AWARDS:</b>      |  | 11.00                                  | \$800,086            | \$437,600       | \$1,237,686         | \$212,195               |
| <b>Senator George J. Mitchell Center</b> |  |  |                      |                 |                     |                         |
| Hallsworth, R.                           | Mitchell Lecture on the<br>Environment   | Maine Humanities Council               | \$792                | \$5,132         | \$5,924             | \$0                     |
| Hallsworth, R.                           | Penobscot Information<br>Coordination  | US Dept of Commerce                    | \$9,600              | \$0             | \$9,600             | \$2,029                 |

Awards Received for FY 2009

| <b>Name</b>                         | <b>Title</b>  | <b>Sponsor</b>              | <b>Sponsor Total</b> | <b>UM Total</b>  | <b>Total Amount</b> | <b>Sponsor Indirect</b> |
|-------------------------------------|---|-----------------------------|----------------------|------------------|---------------------|-------------------------|
| Nelson, S.                          | Determining the Effectiveness of the Clean Air Act                            | US Dept of the Interior     | \$33,394             | \$0              | \$33,394            | \$10,982                |
| Nelson, S.                          | Development of a Resource Stewardship Strategy for Boston Harbor Islands      | US Dept of the Interior     | \$6,000              | \$1,528          | \$7,528             | \$849                   |
| Nelson, S.                          | EPA IAG for Clean Air Act trends research, 2008-2009                          | US Dept of the Interior     | \$40,498             | \$0              | \$40,498            | \$13,318                |
| Nelson, S.                          | Professional Partnership and Praxis: Connecting Teachers, Working Scientists  | ME Dept of Education        | \$20,173             | \$4,875          | \$25,048            | \$3,362                 |
| Peckenham, J.                       | FY 2009 Maine Water Resources Research Institute Program - Management         | US Dept of the Interior     | \$12,140             | \$32,893         | \$45,033            | \$0                     |
| Peckenham, J.                       | Road Salt Risk Assessment   | ME Dept of Transportation   | \$17,408             | \$3,244          | \$20,652            | \$3,244                 |
| Peckenham, J.                       | The Role of Social Capital, Trust and Learning in Solving Groundwater Quality | US Dept of Agriculture      | \$111,000            | \$0              | \$111,000           | \$22,200                |
| Peckenham, J.                       | WRRI Information Transfer   | US Dept of the Interior     | \$49,355             | \$48,142         | \$97,497            | \$0                     |
| Vaux, P.                            | Development of a Resource Stewardship Strategy for Boston Harbor Islands      | US Dept of the Interior     | \$54,000             | \$13,752         | \$67,752            | \$7,641                 |
| Vaux, P.                            | RCN: Diadromous Species Research Restoration Network (DSRRN) Yr 2             | National Science Foundation | \$7,548              | \$0              | \$7,548             | \$2,089                 |
| <b>SUBTOTALS: NUMBER OF AWARDS:</b> |   | 7.70                        | <u>\$361,908</u>     | <u>\$109,566</u> | <u>\$471,474</u>    | <u>\$65,714</u>         |

Awards Received for FY 2009

| <b>Name</b>                               | <b>Title</b>                             | <b>Sponsor</b>                        | <b>Sponsor<br/>Total</b> | <b>UM<br/>Total</b> | <b>Total<br/>Amount</b> | <b>Sponsor<br/>Indirect</b> |
|---|--|---------------------------------------|--------------------------|---------------------|-------------------------|-----------------------------|
| <b>VICE PRESIDENT FOR STUDENT AFFAIRS</b> |  |                                       |                          |                     |                         |                             |
| <b>STUDENT AFFAIRS</b>                    |  |                                       |                          |                     |                         |                             |
| <b>Public Safety</b>                      |  |                                       |                          |                     |                         |                             |
| March, N.                                 | Homeland Security 2009-2011              | US Dept of Homeland Security          | \$51,975                 | \$0                 | \$51,975                | \$0                         |
|   | <b>SUBTOTALS: NUMBER OF AWARDS:</b>      | 1.00                                  | \$51,975                 | \$0                 | \$51,975                | \$0                         |
| <b>STUDENT HEALTH SERVICES</b>            |  |                                       |                          |                     |                         |                             |
| <b>Cutler Health Center</b>               |  |                                       |                          |                     |                         |                             |
| Johnson, D.                               | Touchstone Suicide<br>Prevention Program | US Dept of Health & Human<br>Services | \$99,875                 | \$109,917           | \$209,792               | \$21,110                    |
|   | <b>SUBTOTALS: NUMBER OF AWARDS:</b>      | 1.00                                  | \$99,875                 | \$109,917           | \$209,792               | \$21,110                    |

Awards Received for FY 2009

---

**Totals for FY 2009**

|                         |                    |
|-------------------------|--------------------|
| Total Number of Awards: | 429                |
| Sponsor Total:          | \$57,240,046       |
| UM Total:               | \$12,934,236       |
| Project Total:          | \$70,174,282       |
| <i>Indirect Costs:</i>  | <i>\$7,778,933</i> |